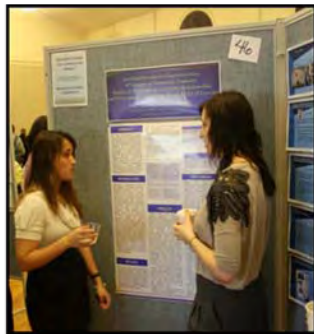
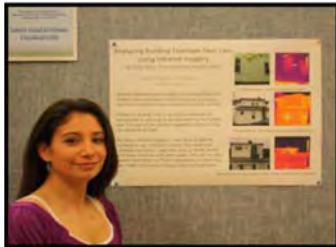


# Research Across the Curriculum

Made possible through a grant from the  
Davis Educational Foundation

---

**RAC** reflects Lasell's commitment to connected learning and students who are *productive* rather than *consumptive* learners.

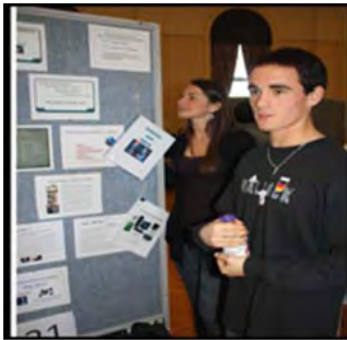


**RAC** challenges students to apply information literacy, use investigative skills, and communicate effectively.

# Research Across the Curriculum

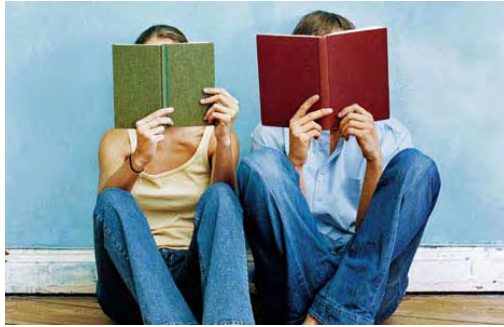
---

Since the launch of the **RAC** in 2009, over 75 new research endeavors have been generated. Explore some of these innovative projects by Lasell faculty and students. Look for other projects at the upcoming Connected Learning Symposium and at [www.Lasell.edu](http://www.Lasell.edu)



# FIRST YEAR SEMINAR STUDENT RESEARCH

---



**Students' Reading Habits**  
Prof. Carole Center

**Older and Younger Adults' Perceptions of Happiness: A View from the Lasell Intergenerational Community**  
Prof. Joann M. Montepare



**How Can I Connect the Past and Present in My Own Personal History through Visual Communication?**  
Prof. Margo LeMieux

# ENVIRONMENTAL STUDIES RESEARCH

---

## Lasell College Campus Tree Inventory Geography on the Green Line Aquatic Field Studies on the Charles

Prof. Michael Daley

Students in  
Diversity of Living Organisms  
World Geography  
Environmental Science



# The Impact of Text Message Alerts on Building Occupant Electricity Consumption Behavior

**Sydney O'Brien**

Undergraduate Research Scholar



Prof. Michael Daley  
Faculty Mentor



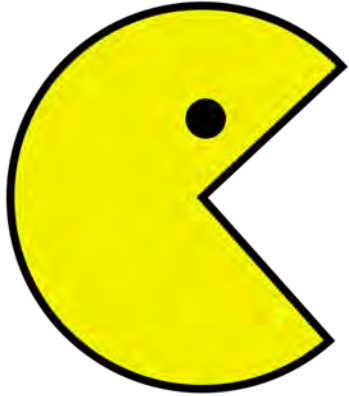
**Kelly Silvia**

Undergraduate Research Scholar

**Analyzing Building Envelope  
Heat Loss During Infrared Imagery**

# STUDENT RESEARCH IN COMMUNICATION

---



## Critical Analysis of Arcade Adaption

Prof. Brian Wardyga

Students in Advanced Communication Class



# Terrorism and the Internet



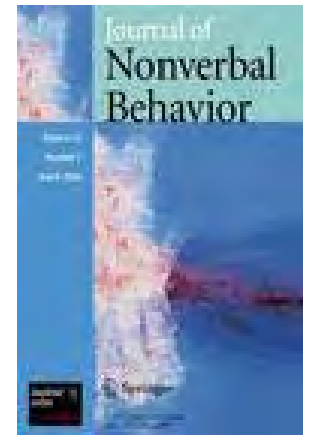
**Prof. Dana Janbek**  
Research Assistant  
Shannon Hodge



## Research Trends in Nonverbal Behavior: 1970's to Present



**Prof. Joann Montepare**  
Research Assistants  
Meghan Rosin and Maria Simone



# RESEARCH IN ATHLETIC TRAINING AND SPORTS SCIENCE

---

## Literacise: An Interdisciplinary Approach to Literacy and Exercise

**Stacey Schley**

Undergraduate Research Scholar

Prof. Cristina Haverty, Faculty Mentor



# MARKETING and MANAGEMENT RESEARCH

---



The Newton-Needham  
Chamber of Commerce

## **Analysis of the Challenges in Small Business Operations**

Profs. Hector Iweka and Jerry Madkins  
Research Assistants  
Samantha Plack and Benjamin Neiditz



## **Exploring Child Care Needs Assessment for the Newton Child Care Commission Fund**

Prof. Hector Iweka  
Market Research Class

# ACCOUNTING and FINANCE RESEARCH

---

## **Dorm Room Energy Audit and Estimation of Green Fees Using Contingent Valuation Method**

Prof. Tulin Johahnsson and Students in Environmental Economics



## **The Economic Impact of Lasell College on Local Communities and on the State of Massachusetts**

Prof. Tulin Johahnsson

Research Assistant, Elizabeth Blackwell

# SOCIAL SCIENCES AND HUMANITIES RESEARCH

---



## **A Case Study of Boston Real Estate Tax Exemptions**

Prof. Paul DePole and Students in Policy-  
Making and the Political Process

## **Beyond Literature: Ethics in the Real World**

Prof. Michelle Niestepski and  
Students in Ethics and Morality in Literature



## **Knowledge and Awareness of HIV/AIDS among Undergraduate Students at Lasell College: A 20- Year Retrospective Analysis**

Prof. Stephen Sarikas and Joann Montepare  
Research Assistants, Aaron Paniccia, Katelyn Gormley



# FASHION RESEARCH

---

**Developing Creativity in Fashion Design Students**

**Determining Relevance of Verbal Descriptions for Creativity in Fashion Design**



Prof. Mary Ruppert-Stroescu  
Research Assistants  
Gina Gross and Avery Bell



**Exploring Mme. Gres and Mme. Vionnet  
in the Media of the 1930s**

