

# LASELL COLLEGE

Report on the Year  
July 1, 2008 - June 30, 2009



*Advancing Towards* **Vision 2012**

## Board of Trustees

---

Michael B. Alexander  
**President**

Eric Turner  
**Chairman**

Susan Hass  
**Treasurer**

Marisa L. Mascaro  
**Clerk**

Sally M. Andrews  
Keith D. Bilezerian  
Richard K. Blankstein  
Rena Clark  
RoseMary B. Fuss  
Nancy Curtis Grellier '49  
Helena Bentz Hartnett  
Kathleen D. Hegenbart  
Robert H. Huntington  
Lemuel Lanier  
Jackie Hoffmeier Lee '68  
John F. Leonard  
Michael Maggiacomo  
Jack Maguire  
Dwight B. Massey  
Susan Moran  
Ellen S. Offner  
Francis J. Perry, III  
John V. Pilitsis  
Elisse Allinson Share '65  
Erik J. Stapper  
Adelaide Shaffer Van Winkle '36/H'96  
Kathryn West  
Judith B. Wittenberg

### Ex Officio

Patricia Beck Bishop '97  
Urit Chaimovitz '98

### Trustees Emeriti

Ruth Turner Crosby '42/H'92  
Nancy Lawson Donahue '49/H'98  
Richard S. Holway H'01  
Lynn Blodgett Williamson '46  
Donald J. Winslow

## Overseers

---

Patricia Beck Bishop '97  
**Chairman**

Joan Conradi McLaughlin '59  
**Secretary**

Carol C. Cacciamani '65  
Coleman H. Casey  
Edward J. Christiansen  
Patricia Gura Conroy '55  
Marjorie Westgate Doran '37  
Susan Rinklin Dunne '82  
Thelma Greenberg Florin '54  
Shirley Vara Gallerani '53  
Patricia Torbron Geoghegan '68  
Priscilla Spence Hall '43  
Heidi Watkins Helwig '96  
Sally Ishihara  
Susan S. Kaplan  
Susan Slocum Klingbeil '45  
William Klingbeil  
Clara Silsby Lamperti '50  
Sharon K. LeVan '66  
Gloria Boyd Major-Brown '44  
Jo-Ann Vojir Massey '51  
Reverend Roger C. Moulton  
Joan Deshefy Patenaude '57  
Nancy Burrows Putnam '50  
Alan H. Robbins  
William D. Roddy  
Robin Sherman MSM'06  
Lee P. Smith  
Murton Sudalter  
Tamara Bettcher Walker '78  
Joan Howe Weber '51  
Harriet Markham Wedeman '48

## Corporators

---

Virginia Thomas Baxter '39  
Jean Campbell '44  
Nancy Van Deusen Connor '57  
Sharon Carley Fitts '62  
Jewell Ward Ganger '49  
Nancy L. Goodale '66  
Jacqueline Paulding Hauser '50  
Jane Wadhams Hazen '49  
Kathryn Morgan Lucey '67  
Dorothy Cooke Merchant '40  
Barbara Stickle Mode '47  
Ann J. Mignosa '87  
Jean Michael Petersen '39  
Ruth Fulton Rardin '40  
Joy Stewart Rice '55  
Linda Telfer '60  
Marsha Keyes Tucker '64  
Charlotte Lindgren Winslow

## Lasell Alumni, Inc. Board of Management

---

Urit Chaimovitz '98  
**President**

Crista Cannata '04  
**Vice President**

Nancy Van Deusen Connor '57  
**Treasurer**

Joy Stewart Rice '55  
**Recording Secretary**

Jessica Anthony '98  
Patricia Beck Bishop '97  
Jennifer Brooks '99  
Chantel Daley '05  
Nancy Curtis Grellier '49  
Jacqueline Paulding Hauser '50  
Caroline Knoener-Skowronek '83  
Kathryn Morgan Lucey '67  
Sean McCullen '07  
Ann J. Mignosa '87  
Jenifer Pope '04/MSM'08  
Casey Rich '07  
Katherine McDonough Ryan '67  
Gloria Drulie Schluntz '50  
Jennifer Toscano Seibert '04  
Linda Telfer '60  
Marsha Keyes Tucker '64  
Amy Pilat Weksner '04  
Marilyn Blodgett Williamson '46  
Bonnie Berman Wugman '72

### Sustaining Members

Ruth Turner Crosby '42/H'92  
Sharon Carley Fitts '62  
Barbara Stickle Mode '47





**Dear Lasell Alumni and Friends,**



Michael B. Alexander

The 2008-09 Academic Year was a tough one for colleges all across the country. A deep economic recession, crashing financial markets, and changing demographics among prospective students caused many colleges to take a pause and reassess their priorities. Although we at Lasell College were not immune to these external pressures, we were fortunate in that we already had in place a Strategic Plan to which the whole Lasell community was committed. And what is a strategic plan if not a clear and definitive statement of an institution's priorities, goals, and objectives.

In dealing with the uncertainties of the external world, we were able to look to our values as espoused in the Strategic Plan and remain focused on doing everything we could to contribute to the personal and intellectual development of each and every student. Adhering to the priorities we had established helped us navigate these turbulent times with limited problems and few interruptions.

As a result, Lasell College kept moving forward and maintained the momentum it had established. And in the most difficult year for fundraising in at least 20 years, we increased giving to our Annual Fund by 19 percent. This felicitous result could not have happened without the support of alumni and friends like you who reached into their pockets and found room in their hearts, even in these difficult financial times, to give even more than they had in the past.

This achievement was made possible by Trustee Adelaide Shaffer Van Winkle '36/H'96, who established an Annual Fund Challenge Grant, matching increases in Annual Fund giving over the prior year, up to an aggregate total of \$150,000. However, even if we adjust for the effect of Adelaide's generosity, the Annual Fund still increased by approximately four percent, an incredibly positive result in these challenging times.

Now we have advanced two-fifths of the way towards Vision 2012, the five-year goals we established in October 2007. As shown in this Annual Report, we are well on our way to accomplishing most of the goals we established for ourselves, including the opening of two new residence halls, increasing undergraduate and graduate enrollment, adding new Master's programs, increasing our full-time faculty, emphasizing the roles of social responsibility and civility, and expanding the arts on campus.

Since we have proven that we can maintain our upward trajectory — setting enrollment and fundraising records — even under the most challenging circumstances, it is now time to start addressing some of the more ambitious projects that were included in the Strategic Plan. Next on the agenda is raising the five million dollars needed to build the Center for Creative and Applied Arts, the renovation of the two buildings next to the Yamawaki Art and Cultural Center that will provide much-needed studio classrooms, faculty offices, and display and storage space. Following on the heels of that project will be the effort to raise the money for a new athletic center, a facility much needed to support our expanded student body.

I believe that the alumni and donors of Lasell College have a right to feel proud of what they have accomplished over the last 20 years. The achievement of our strategic goals will enable Lasell to continue to move forward with confidence, because of the loyalty and dedication of our extraordinary alumni, students, families, faculty, staff, and friends. You are the tangible evidence of the contribution that Lasell College makes to the world and you are what makes Lasell College the special place that it is today. The future couldn't be brighter, and I am grateful for all that you do to make it so.

Sincerely,

Michael B. Alexander  
President



# A Green Gathering and Living Space

There's been a buzz on campus since the announcement of the construction of East and West Residence Halls. But after the ribbon cutting and the September arrival of the students who had the lucky room draws, the excited hum turned to a roar.

*"The quad creates a unique living and leisure space and having such an incredible spot at Lasell is huge."*

*Mike Costello '12*

"The opening of the two new residence halls, the new McClelland fitness center, and the courtyard are tangible evidence of the forward progress Lasell is achieving," says President Michael Alexander. "This is one of the first steps in the execution of both the Strategic Plan and the Campus Master Plan and we are particularly proud because both halls have been built to LEED (Leadership in Energy and Environmental Design) specifications. They are the first truly green buildings on campus."

When approaching the design of the new quad, the architects considered the whole side of the campus, from Rockwell, to Forest Suites, and on down to Woodland Road. "The landscaping and flow were very important," says Director of Plant Operations and Public Safety Tom Koerber. "We paid a great deal of attention to the VanWinkle garden and, although we planted an enormous number of replacement trees, we also made sure that the pathways did not disturb some particularly beautiful specimens."

The end result is magnificent, but the construction was complex. "Because we were operating so close to VanWinkle and McClelland Halls, we had to use different techniques," explains Tom. "We also ran into many boulders, extensive ledge, and there were continuous weather challenges. We worked six days a week to make the schedule."

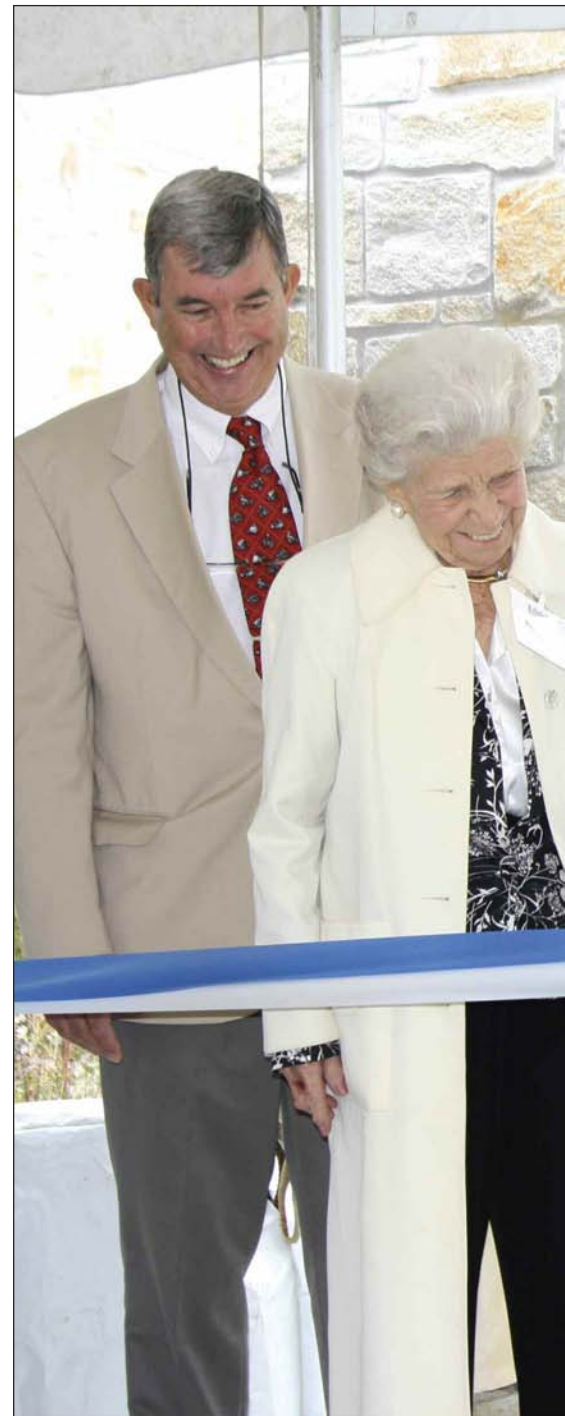
Students are taking full advantage of the glistening complex. There are people on the grass and walls having lunch, working on their computers, or playing Frisbee and Wiffle ball.

"I lucked out big time!" exudes Ainsley Wolfe '12, a Resident Assistant in West. "When I first opened the door to my room I couldn't believe it. Plus, it's a five minute leisurely walk to class and, as a member of the field hockey team, I now have all of a one minute walk to Grellier Field. The proximity of the fitness center reminds me that I should be working out."

"This side of campus has turned into a real neighborhood," says Mike Costello '12, who also lives in West. "There is a total sense of community."

"Last year I lived in McClelland so I had a first-hand view of all the construction," he continues. "I have a close knit group of friends and we wanted to be together as sophomores and were definitely hoping for rooms in East or West. We love this side of campus!"

"The quad creates a unique living and leisure space and having such an incredible spot at Lasell is huge."







Construction begins.



Mike Costello '12, Matthew Gavigan '11, Nicholas Sampson '11, and Andrea Ajila '11 stroll through the quad.



East and West Residence Halls.



Officiating at the ribbon cutting are (L to R) Director of Plant Operations and Public Safety Tom Koerber, Trustee Adelaide Shaffer Van Winkle '36/H'96, Newton Mayor David Cohen, Board Chairman Eric Turner, and President Michael B. Alexander.

# Fresh Faces

Lasell welcomed a record 582 first-year and transfer students this fall, and they traveled to campus from 23 states and 13 foreign countries. Each of them arrived with their own aspirations and expectations.

*Ty Myers '13*

Ty Myers '13 is from South Burlington, Vt. and he jumped right into life at Lasell. "I'm a people person," he says, "I like being involved. In high school I was a member of the chorus, was in the drama club, and I planned our talent night, which has a long standing tradition behind it. I also participated in community service."

After settling in at Lasell and classes were underway, Ty decided to run for the Class of 2013 president. "I have never been in student government, although I was part of my high school's peer leadership program. But I believe in making changes and being a problem solver, so I threw my hat in the class president ring. I am so pleased to have been elected."

All the class presidents are members of the Student Government Association (SGA) and discuss school-wide issues. "Getting the broad perspective is very helpful and has reinforced my top priority as class president, which is to try and get first-year students to come together and be part of the school community."

Music has always been a big part of Ty's life. He plays the piano, enjoys singing, and is a member of Lasell's Radio Club. "A friend and I have a show and we play everything from oldies, to hip hop, to pop. My co-host likes different styles than I do, so we're really open to anything and everything," he says.

Ty is hoping to study abroad during his junior year. "In high school I did an international exchange program and went to Japan for three weeks and stayed with a family in a town that's near Kyoto. Everyone was so welcoming — even with the language barrier they found a way to make me feel totally at home. Later that year, two students came and visited our school and one stayed with me for two weeks. The experience made me want to travel more and meet people from around the world."

When it came to making his college choice, Ty picked Lasell over the University of Vermont and Columbia College in Chicago, which emphasizes art and music. "I love Lasell's size — its small classes and the opportunity to really interact with the teachers. The internship programs and the connected learning experiences, as well as its proximity to Boston — these are all part of why I came here."

"Now I'm ready to take on whatever comes my way and I'm involved in a lot. I want to do it all."

**“ I love Lasell's size — its small classes and the opportunity to really interact with the teachers.”**  
*Ty Myers '13*



Ty's enthusiasm and drive are shared by Jill Ostiguy '12 who arrived on campus this fall as a sophomore transfer student. "My hunch about coming to Lasell was certainly correct," beams Jill. "I'd give the transition an A++ rating!"

A Fashion Merchandising major, Jill spent her freshman year in New York City at the Laboratory Institute of Merchandising. "What I missed was having a real college campus with a feeling of community. I grew up in New England and felt a strong pull to return. I visited Lasell over my spring break and that clinched the deal. I knew I wanted to transfer here."

Jill is busy exploring all of Lasell's resources. She has joined the staff of the College newspaper, *The 1851*, is a member of the crew club, and, in the evenings, she is part of the Alumni Phonathon team. "My advice to every incoming student is, 'Get involved.' It makes such a difference and gives you a richer experience."

All of Jill's credits transferred to Lasell and she is now fulfilling her core requirements and taking as many merchandising classes as she can fit in. "I'm hoping to study in London next fall and I've already gotten the packet from American Intercontinental University," she says. "I'm psyched."

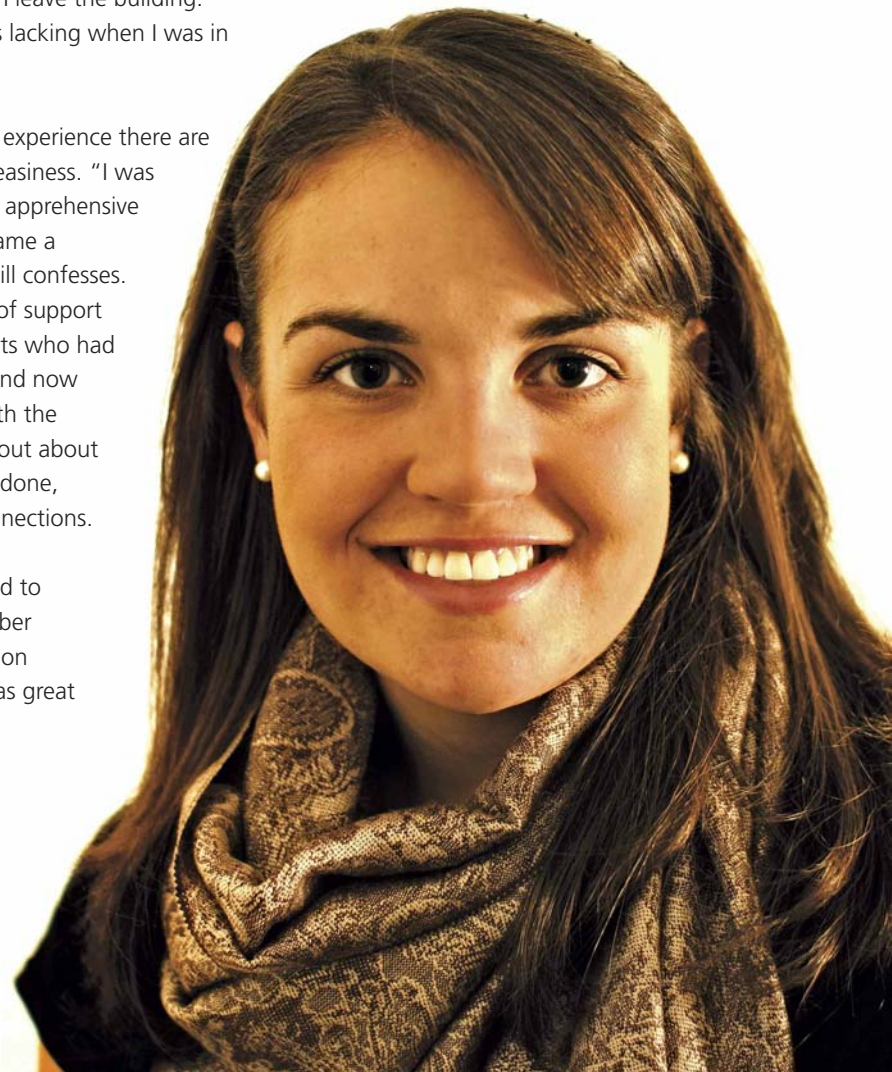
Jill lives with four other students in the new East Residence Hall and has quickly made friends. "My roommate is an Athletic Training major and I love hearing about the classes she is taking. We get along terrifically and are on the same page. The two other girls are really nutty and fun — we balance out perfectly. I totally lucked out and I love finding myself in the beautiful new courtyard when I leave the building. This is what was lacking when I was in New York."

With every new experience there are moments of uneasiness. "I was definitely a little apprehensive when I first became a Phonathoner," Jill confesses. "But I got a lot of support from the students who had done it before and now I love talking with the alumni, finding out about what they have done, and making connections."

"I was also asked to attend the October Donor Recognition Dinner and it was great

meeting so many people who feel so strongly about the College. They have all remained a part of Lasell and believe in giving back. They inspire me to want to do the same."

*Jill Ostiguy '12*



***Get involved. It makes such a difference and gives you a richer experience."***

***Jill Ostiguy '12***

# Artistic Expressions

The lights are on late in the Yamawaki Art and Cultural Center. Some evenings its auditorium reverberates with the sounds of actors' voices while on other nights pulsating jazz rhythms fill the air.

Lasell's history includes vibrant music and arts programs, but interest has waned in recent years. Now enthusiasm for both is thriving and expanding on campus, thanks to a new effort to invigorate the arts. This fall the lights came up on a full-length theatre production of *Table Manners*, part of the "Norman Conquests" trilogy by Alan Ayckbourn, the classical choral group is back, and a student Jazz Ensemble has been formed.

***"It's a thrill to be part of Lasell's growth in the performing arts."***

***Professor and Play Director Hortense Gerardo***

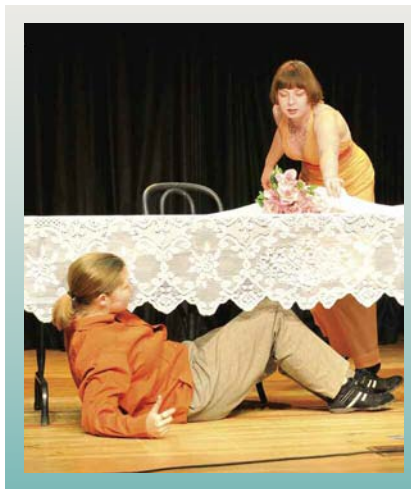
She is a playwright and anthropologist whose work has been featured in Boston, New York, and Edinburgh.

"Auditions are a great leveler and there was a lot of talent exhibited at the tryouts for the play's six parts. Additionally, I had a full production crew sign up and they have taken on leadership roles and found numerous volunteers to assist them.

"Everyone is doing this in addition to carrying a full course load. It's a huge time commitment but no one hesitated. I go into rehearsals after a full working day saying 'we can do this' in part to convince myself. But these students have such boundless energy that I come away recharged."

School officials had a sense that students and faculty would step up to the challenge. "We thought we could do more," says Steve Bloom, Dean of Undergraduate Education. "We think more students are singing in choruses and choirs and taking part in theatrical productions before they get to Lasell. We believe there's more interest out there and we wanted to tap into that."

For the play, *Table Manners*, an English farce, the six actors have immersed themselves in their characters. Brian Cotnoir '12 is the only male in the cast, and plays alongside two females who have taken on the other male roles. "It's been fun giving them hints on male mannerisms," he says. "As the fall has progressed we all gained confidence and none of us want to let the others down."



(L to R) Lindsay Holcomb '12 and Lauren Ennis '11 in *Table Manners*.



Danielle Murphy '12.

"I've never had a role this big and I've never done comedy," says Colleen McCleary '12, a Fashion Design major who plays the part of Tom. "I have a very girly voice, wear colorful clothing, and have feminine body language. Tom is a closed character — my opposite. He's very reserved and doesn't talk about feelings. I was so proud to be picked to play him. I like doing things that aren't like me."

At rehearsals, Professor Gerardo stresses the value of improvisation and its ability to boost the actors' comfort level. This is exactly the same message that Music Professor Harvey Finstein gives to the students in Lasell's newly-created Jazz Ensemble. "It's far better to just go with it," he says.

This fall, he assembled a talented group of seven musicians and vocalists who are equally facile with the soft breezy notes of "Summer Time" or the foot stomping beat of "Mustang Sally."

"It's completely different from anything I've ever experienced and it's a challenge," says Diana West '13. "I've played the clarinet for 10 years, but always classical. I've only ever played with sheet music, so improvisation is new and difficult for me. Yet Harvey is always encouraging and tells me that I have to at least act like I know what I'm doing."

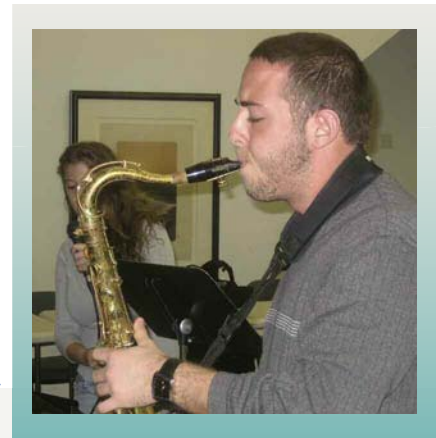




Geoffrey Caravella '10.



Julian Dutton '11.



Brett Walberg '12.

Brett Walberg '12 is a saxophonist and a serious jazz musician. "I have been in a jazz band since fifth grade and have played professionally since ninth grade," he says. "I am a jazz person down to my feet. My hope for the future is to have more organized music on campus — a Jazz Studies program and/or a Music major."

A traditional chorus on campus is also part of the reinvigorated music program. Whether it is a choral classic from Benjamin Britten or an African hymn from Zambia, the soprano and alto voices in the new choral ensemble at Lasell are a vital part of the arts resurgence at the College.

"We are putting a different effort into this than we did before," says Dean Bloom of the College's efforts in the arts arena.

A crucial part of the plan was to locate and hire the right people to bring the arts back and raise its profile among the students, faculty, and staff.

Allegra Martin, a young choral conductor, has already begun to play her role. She graduated with a degree in choral conducting from Westminster Choir College in Princeton, N.J. and arrived at Lasell in the fall as the leader of Lasell's traditional chorus.

"It's a great opportunity to be able to build a program," she says. "I have visions of having multiple choral ensembles, taking the kids to festivals and trips, and bringing choirs in here to perform."

The choral ensemble was offered to undergraduate students this fall as a credited course or for sheer enjoyment and extracurricular activity.

"I started out when I was eight and took singing lessons until I was 17," says Carissa Woolf '13. "I've done a ton of musicals, was in chorus throughout middle school, and involved in an a cappella set through my youth group. Singing has always been a huge part of my life."

Students at Lasell now have the opportunity to experience choral music, jazz, or drama alongside of other extracurricular activities. "There is the opportunity to experience the arts in addition to something like a basketball game," says Dean Bloom. "We want to open up as many doors as possible for students to achieve self-expression and satisfaction."

***"We want to open up as many doors as possible for students to achieve self-expression and satisfaction."***

***Steve Bloom***

***Dean of Undergraduate Education***



Mimi Rogers '12.



Sally Jean-Baptiste '12.



Diana West '13.

# People and Programs

Professor Dana Janbek



"With a lot of organizations going global, it is important for today's students to understand [cultural differences in communication]. My contribution, at Lasell, is to add an international aspect to studying media systems, public relations," says Janbek. She has a unique cultural perspective as a Jordanian and as a member of the Circassian ethnic group.

Janbek's work eventually took her to World Communities of Louisville — a coalition of organizations supporting diversity and eliminating the causes of discrimination. Then, after graduate school, she worked for the Jordanian Embassy in Washington DC, setting the stage for her Ph.D. Communications program at the University of Miami — focusing on international communications.

At a glance, you might mistake Lasell's newest Communication professor for a student. With her small frame and young face, Dana Janbek, could blend right in with the student body. But take a few minutes with Janbek and you find she is a focused researcher who is on a mission — to give students a glimpse of how others across the globe communicate.

Born in Jordan, Janbek came to the United States in 1999 to attend Spalding University in Louisville, Kentucky. After finishing her communications degree there, she developed a craving for international/intercultural relations and communications.

With an internship at the Kentucky World Trade Center — researching intercultural communications for businesses — she saw a direct relation between understanding different cultures and success in a global marketplace.

Janbek became interested in the topic after co-authoring a paper on terrorism and social media.

"You have all these [terrorist] websites and they are there to send messages to the rest of the world about their organizations, to discuss their opinions. Many are available in different languages, so their messages can be [spread broadly]," says Janbek.

Beyond research and study of this subject, Janbek's attention is now on her students.

"During my Ph.D., my mentor at the University of Miami gave me the chance to teach — that opened the door [for me]. I could see myself doing it," says Janbek.

Janbek arrived on the Lasell campus in August and teaches Intercultural Communication, Introduction to Mass Media, and Principles of Public Relations, which span both the undergraduate and the new Master's program in Communication at Lasell.

Janbek tries to offer an international example for each of her courses, so the students can be exposed to intercultural communications as well. Several times she has called on colleagues and friends to serve as guest speakers including the Founding President and former CEO of MGM Networks Latin America and an award winning documentary filmmaker who produced "One Water" — about world water usage.

This exposure will improve her students' understanding of global communications and prepare them for a world outside of Lasell.

***"I have found the students very receptive to new information. Some do not have much international experience, so they are interested in what is going on in other parts of the world."***

***Professor Dana Janbek***

Janbek's concentration on terrorists' use of the internet and online communications has led to presentations at eight different conferences, including one in Dubai in 2007 — where she connected with the co-author of her new book, *Global Terrorism and New Media: The Post Al-Qaeda Generation*, to be published in 2010 by Routledge.

"Whatever job they end up in, they will work with people from different cultures and it will likely require them to travel as well," she says. Janbek wants her students to be ready.



Dwayne Powell '09

***“A Master’s will give me an edge and open up more opportunities for me.”***

***Dwayne Powell '09***

The course descriptions are complete and the curriculum is set for the recently approved Master’s in Sport Management. Classes will start in September 2010 and the new degree is part of the College’s Strategic Plan to offer four new graduate-level programs by 2012.

“The sport business is a multi-billion dollar industry that requires individuals with exceptional leadership, management, and decision-making abilities,” says Dr. Robert Prior, Chair/Associate Professor of Sport Management. “In today’s competitive job market, this Master’s program will provide students with the qualifications, knowledge, and essential skills for a successful career in the sports industry.”

Dwayne Powell '09 has been waiting for the opportunity to enroll in the program. “I was a Sports Marketing major and I heard from Professor Prior that the new program was in the works,” he says. “A Master’s will give me an edge and open up more opportunities for me.”

As an undergraduate, Sports Leadership was Dwayne’s favorite course and he will be able to pursue this further on the graduate level. The Master’s program will combine courses in management, leadership, and marketing and they will be both online and in hybrid form.

Dwayne has already taken on a leadership role. A star on the Lasers’ men’s basketball team, he is now an

assistant coach. “When Head Coach Aaron Galletta mentioned that he was losing two coaches, I stood right up. It’s been a bit hard and a learning experience. Guys I played with are now seniors, but they are getting used to me in my new position and they listen.”

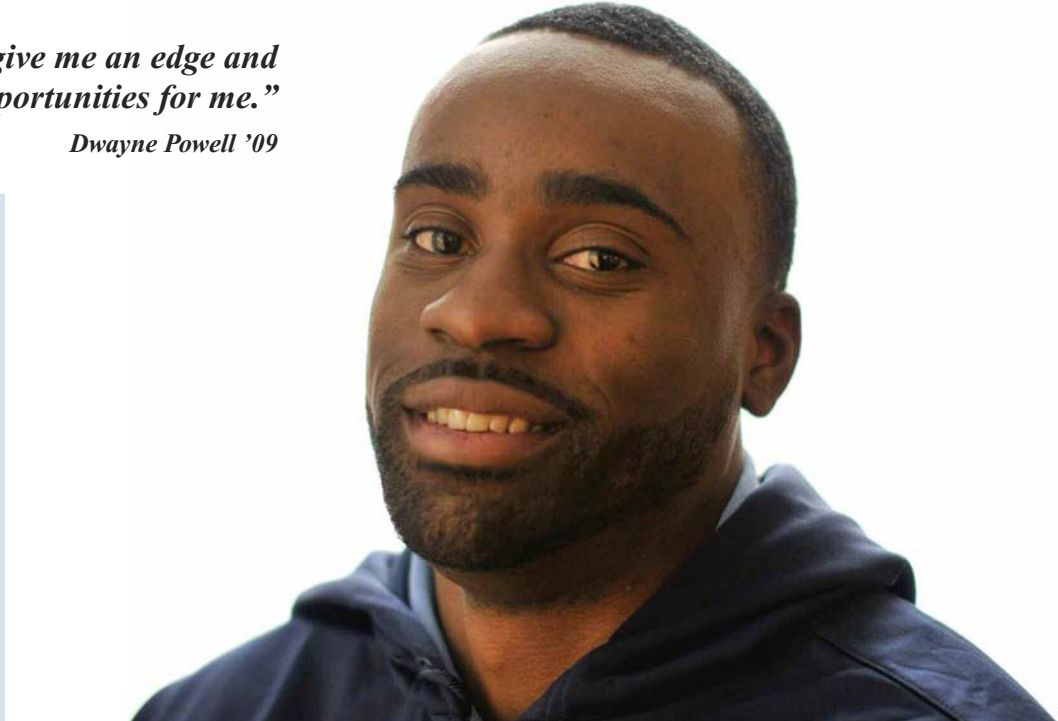
Coaching is in Dwayne’s blood. “My father is a coach and I played under him in the recreational leagues. I learned from him what the job is all about. He is very excited about my getting a graduate degree.”

Dwayne’s long-term goal is to be an athletic director of a college program and he would also like to start a youth basketball camp. “Basketball has done so much for me. I want to give back,” he says.

Professor Prior has a lot to do between now and next September. In addition

to hiring a full-time faculty member to teach in both the graduate and undergraduate programs, he is going through an extensive program self-study with COSMA (Commission on Sport Management Accreditation), a new national accrediting body that recognizes excellence in sport management education. “We are one of only nine sport management programs that have been granted candidacy status from a total of 300 programs nation-wide,” he explains. “Once we are approved it will be a great distinction for Lasell College and the credibility of the Sport Management Program.”

When Dwayne Powell and his fellow students receive their Master’s degrees, they will certainly be ahead of their competitors.



# Civic Collaborations

"Come to the dance. Yes, Yes, Yes — Come to the dance," exudes Professor Sharyn Lowenstein, director of the Center for Community-Based Learning.

All fall her sophomore Honors Leadership class planned a special evening for the clients of the ASCENT Program (Afternoon Social Club Encouraging Networking and Transitions) run by Newton's Price Center. This organization supports young people with developmental disabilities by encouraging personal growth and participation in the community.

"Professor Lowenstein put the ball in our court and asked us to come up with a group service project," explains Justin Loguidice '12. "We visited with Karen Manning, ASCENT's program director, and were instantly convinced that this was the organization that we wanted to work with. Hawaiian Bash 09/Surfs Up was on!"

"We have held dances before," says Karen, "and our clients, some of whom are autistic, have Down's Syndrome, suffer from traumatic brain injuries, or are otherwise emotionally challenged, always enjoy them. It was exciting to see the Lasell students embrace the idea of planning an evening. They are in touch with this age group and immediately had thoughts on how to draw our clients in."

"I don't think we realized the severity of the disabilities that these young people face," says Justin. "But when we met with them it became apparent that they are smart, like to have fun, and had definite ideas about the activities and foods they wanted."

"My brother is a cancer survivor, so I am aware of the difficulties that families face," he continues. "Planning



Twirling grass skirts show the exuberance of the evening.

***"I think we surprised ourselves when we discovered that we could just sit down and talk," recalls Lily Altshuler '12. "As we got to know each other I found myself discussing boyfriends, Verizon phone plans, favorite colors — just random things in their lives. Once we pushed ourselves to step outside of our comfort zones, we all had a great time."***

this evening made me ask myself, 'What are you bringing to these kids?' It opened my eyes. I didn't know the steps it would take to be a leader, to organize an event, and to be accepting of other people's culture and limitations."

Sporting Hawaiian shirts and grass skirts, the young people arrived at a brightly decorated de Witt Hall and were immediately handed a floral lei. "Right at registration it was apparent how excited they were, but some of the kids were a bit overwhelmed," says Ellen Perl '12. "At first we didn't know how to approach each other."





## Working together to end poverty and injustice

As caregivers and parents commended the Lasell class for 'being nice' and for 'giving back' to the community, Professor Lowenstein countered, "Well, thanks, but for us, it's not just about giving back. The opportunity to plan, implement, and evaluate this event has been an incredible living case study, which helps us translate into practice our text, *Leadership for a Better World*. Collaboratively working with the Price Center has also allowed us to apply many of the principles of responsible social leadership and helped us more effectively understand the concept of team leadership and joint commitment."

Before Thanksgiving, a holiday that celebrates bounty, another collaborative event was held on campus with the objective of bringing understanding about the global disparity in food security to the College. Legal Studies Professor Linda Bucci's first-year Honors class and the Center for Community-Based Learning co-sponsored an Oxfam Banquet.

Following an outline that Oxfam sent, people were divided into three income groups: low, middle, and high. The meal served depended on which identity was drawn.

Attendees found themselves being pushed beyond their comfort zones. "People were asked to role play and were uncomfortable with their situation," says Student Programs Coordinator Amy Greene. "They were having reactions, and that was the point."

"Low income people were asked to sit on the floor," says Jessica Walsh '13. "This annoyed them and when they saw that they were being served a tray of rice and a bucket of water with a cup they became angry — 'We skipped regular lunch for this? This isn't real food,' someone shouted.

"Most people chose not to eat because they were worried about the sanitary conditions. This is a real world concern," Jessica continues. "We let five people move from the low income group to the high income table to show that status is something that isn't set. They were thrilled and it hit home how lucky they were."

During the banquet a discussion revealed that every group there felt uncomfortable. "Those at the high income table ate a meal of pasta and salad and felt pressure because they weren't allowed to share," explains Greene. "The middle income group sat next to the low income and in a real community they might indeed be neighbors. Conflicts around the world are based on limited resources and the balance of power."

"Injustice gets me going and makes me angry," says Diana West '13. "The lunch was a real learning experience and an eye opener for all of us. Our Honors class worked together to help bring the issues of poverty and social injustice to the attention of the campus community."

Civic awareness is sweeping the campus. "We have more student project leaders supporting more events at the College this year than ever before," says Greene. "And, we are seeing students put forth their own ideas for service opportunities. It's an exciting environment."

(L to R) Ninwa Hanna '13 and Jessica Walsh '13 make do with rice and water at the Oxfam Banquet.



# Annual Highlights 2008-2009

## Academic Affairs

- Launched Master of Science in Communication
- Master of Science in Sport Management approved and Master of Education pending approval for Fall 2010
- Implemented Speaking Across the Curriculum components in each department
- Established criteria for capstone courses in all departments
- Increased number of students studying abroad from 17 to 44 in Fall 2009
- Four new full-time faculty members hired
- Received grant from the Davis Educational Foundation to support Research Across the Curriculum initiative
- Received grant from Tomfohrde Foundation and gift-in-kind from NSTAR to support smart metering houses that serve as residence halls

## Enrollment Management

- Applications increased for 12th consecutive year with 582 undergraduate students matriculating
- Full-time undergraduate enrollment topped 1,500, with students from 23 states and 13 countries
- Lasell joined the Common Application which accounted for 44 percent of undergraduate admission applications
- Over 80 percent of applications submitted online
- Open House attendance grew by more than seven percent and over 1,800 families visited Lasell during the year
- Associate Director of International and Multicultural Admission hired
- Graduate student enrollment for Fall 2009 increased 57 percent over Fall 2008
- Web development contractor chosen and design and construction begun with expected launch in February 2010
- New athletic and Board of Trustees websites launched

## Student Affairs

- With the opening of two new residence halls (housing a total of 135 students), the Resident Assistant staff on campus expanded to a total of 45 undergraduate Resident Assistants and two graduate Head Residents
- Introduced Boomer, the new College mascot
- Office of Student Activities finalized the design of a comprehensive leadership development program for students
- Office of Student Activities oversaw 177 programs of which 115 were sponsored by student clubs/organizations, representing a 44 percent increase over the previous year
- Opened a Commuter/Graduate Student Lounge in Brennan Library
- Delivered 37 education programs through Residential Life Office, an increase of 16 percent over the prior year
- Baseball began first year as an intercollegiate sport
- Filled newly constituted positions of Associate Dean of Student Affairs, Health Educator/Clinical Counselor, Coordinator for Student Organizations, and Sports Information Director

## Institutional Advancement

- Developed Strategic Development Plan to support the fundraising goals for Vision 2012 and the Campus Master Plan, approved by Board of Trustees in June 2009
- Raised a total of \$732,000 in the Annual Fund, a 19 percent increase over FY'08
- Achieved \$150,000 Adelaide Van Winkle Challenge for 2009 Annual Fund
- Conducted multiple Planned Giving Seminars
- Supported the President in formation of the President's Advisory Council
- Submitted 15 grant proposals, receiving five grants to date
- Conducted orientations for new Board members and formalized Trustee mentoring system

## Business and Finance

- Completed construction of East and West Halls and new fitness facility in McClelland Hall
- Constructed two new signs on Woodland Road at corners of Grove Street and Forest Street
- Other capital projects completed as budgeted, including extensive renovations to Eager House and Spence Hall
- Formed cross-departmental Cost Efficiency Steering Committee to examine a variety of cost areas
- Hired KPMG to conduct a review of College's system of internal controls and staffing levels
- Implemented single source recycling program in dormitories and selected public buildings on campus

## Lasell Village

- Conducted Health Care Services study as contemplated by the Village's strategic plan, with the help of Roush and Associates consulting firm
- Balanced operating budget achieved for the third consecutive year
- For the third consecutive year, Lasell House earned the highest rating in quality care in its annual evaluation by the Massachusetts Department of Public Health
- Rented space to Genesis, a Lasell House partner, so they can license and build an outpatient rehab clinic within the Village to serve Village residents and Lasell House clients



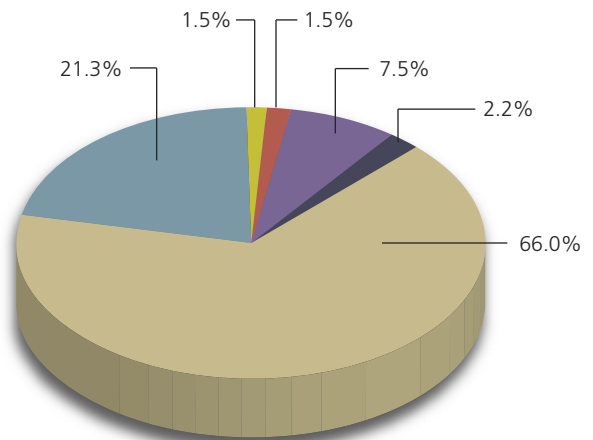


## Financial Year in Review

Operating Revenues and Expenditures, Fiscal Year Ending June 30, 2009

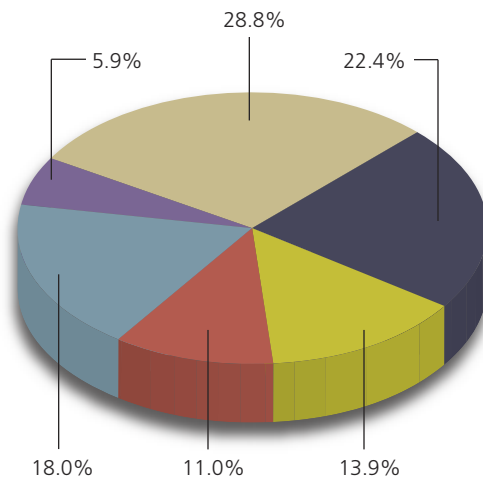
### OPERATING REVENUES

Tuition & Fees	33,213,669	66.0
Room & Board	10,725,229	21.3
Gifts & Grants	757,404	1.5
Investment Income	760,139	1.5
Auxiliary Enterprises*	3,794,758	7.5
Other Income	1,085,617	2.2
<b>TOTAL</b>	<b>\$50,336,816</b>	<b>100%</b>



### OPERATING EXPENDITURES

Instructional/Academic Support	10,848,746	22.4
Student Support	6,744,265	13.9
Institutional	5,347,172	11.0
Room & Board	8,757,944	18.0
Auxiliary Enterprises*	2,860,082	5.9
Financial Aid	13,959,698	28.8
<b>TOTAL</b>	<b>\$48,517,907</b>	<b>100%</b>



**Surplus \$1,818,909**

\* Income generated by the rental of College facilities, the Holway Child Study Centers, the management contracts with Lasell Village, and the associated expenses.

# Annual Fund Leadership Donors

## Honor Roll

We are profoundly thankful to our Annual Fund Leadership Donors for their commitment and investment in Lasell College. Their generosity allows the College to provide financial aid to increasing numbers of students, while also improving resources in the library, strengthening athletics programs, and enhancing academics through adding members of the faculty and more course offerings. This leadership and philanthropy makes a significant difference on campus and we are deeply grateful.

### 1851 Society (\$25,000+)

Michael B. Alexander and Mary Barbara Alexander	The Saunders Foundation
Joan Weiler Arnow '49*	Adelaide Shaffer
Mr. & Mrs. Thomas P. McDonough	Van Winkle '36/H'96*

### Chairman's Council (\$10,000-\$24,999)

Anonymous  
Nancy Lawson  
Donahue '49/H'98\*  
RoseMary B. Fuss\*  
Richard S. Holway H'01\*  
and Jeannine Holway\*  
Nancy Burrows Putnam '50\*  
and George Putnam\*  
Lucille Salhany and John Polcari  
Jean Davies Stanley '50\*  
Joan Howe Weber '51  
Kyo Yamawaki

### President's Club (\$5,000-\$9,999)

Susan Slocum Klingbeil '45\*  
and William Klingbeil\*  
Mr. & Mrs. Jack Maguire  
Jo-Ann Vojir Massey '51\*  
and Dwight Massey\*  
Joan Conradi McLaughlin '59\*  
Mr. & Mrs. Charles E. Moran  
Jean Michael Petersen '39\*  
Harriet Markham  
Wedeman '48\*  
Judith B. Wittenberg  
and Jack Wittenberg

### Winslow Society (\$2,500-\$4,999)

Robert H. Arnow Marjorie Ray Blackett '42* Richard K. Blankstein Jeanne Hubbard Brooks '40* Marcia James Carthaus '57* Urit Chaimovitz '98 Rena Clark Ada Burns Crampton '47* George S. DeArment Trust Lucy Harrison Eimer '40*	Martha Stonebraker Ely '45* Victoria Tenney Graboyes '67 Carol Hill Hart '44 Helena Bentz Hartnett* Susan Hass Kathleen D. Hegenbart* Joan Dorau Hohorst '50* Robert H. Huntington* and Susan McCafferty* Elizabeth Leland Kibbe '38*	Clara Silsby Lamperti '50* Mr. & Mrs. David Langstaff Lemuel Lanier Lela Graham Moses '61* and Horace C. Moses, III* Sharon A. Neble and George R. Neble Ellen S. Offner James Ostrow and Christine Ostrow	Paula DeAngelis Panchuck* John V. Pilitsis Diane Jacobson Rosenberg '56* Elisse Allinson Share '65* and Neil E. Share* Ruth Blaisdell Simmons '44* Erik J. Stapper Kathryn West John Woodward
--	--	---	---

## Spotlight:

## Dave Carlson — Giving Back to a Special Place



**I**n 2002, Criminal Justice Professor David Carlson got his first glimpse of Lasell and the people who work and study here. He knew right away it was an environment he would be comfortable working in. "I had a sense that this was more about who I was as a human being. It was an acknowledgement of how important people are," says Carlson. "We all have this same, fond feeling about the institution."

This, combined with the student-centered focus of Lasell and the hands-on element within the classroom has opened up possibilities for him as a teacher — including the freedom to incorporate photography into his criminal justice courses.

"People here are encouraged to step out of the comfort zone and into areas you might not think you'd step into," he said. All of this made it a very easy decision to give back to Lasell through its Annual Fund, Carlson says.

"My idea was if everyone gave something, then you'd have a bigger impact and be a part of something that is whole," he says.



# Annual Fund Leadership Donors

## Honor Roll

### Torchbearers Club (\$1,000-\$2,499)

Anonymous  
 Shirley Hannafin Adams '51\*  
 Freda Alexander '48\*  
 John E. Amorello  
 Sally M. Andrews\*  
 Margaretta Arnold H'07\*  
 Kathryn Johnston Berardi '71  
 Linda Bailey Bolton '59\*  
 Jane Kremer Bray '60\*  
 Elizabeth Ann Lindsay Buhler '54\*  
 Patricia Ryan Cantin '63  
 David A. Carlson  
 Patricia Gura Conroy '55  
 Thomas E.J. de Witt H'07\*  
 and Margaret E. Ward H'07\*  
 Deloitte Foundation  
 Marjorie Westgate Doran '37\*  
 Elisabeth M. Drake  
 Eastern Bank  
 ExxonMobil Foundation  
 Thelma Greenberg Florin '54  
 FM Global Foundation  
 Karen Manchon Frank '71

Dorothy Carl Franklin '44  
 Vivien Ash Gallagher '64\*  
 Shirley Vara Gallerani '53\*  
 Jewell Ward Ganger '49\*  
 Daniel R. Gant  
 Joanne Monahan Garrity '51\*  
 Janet Murphy George '50\*  
 Ann Preuss Gillerlain '43\*  
 Priscilla A. Glidden\*  
 Eugenia Cooney Glow '45  
 Rona Ruderman Goldstein '61\*  
 Nancy Curtis Grellier '49\*  
 Marion Day Grosjean '57  
 Priscilla Spence Hall '43\*  
 Jane Wadhams Hazen '49\*  
 George Hornig  
 Houghton Mifflin Company  
 Michael Hoyle  
 Mary Hobler Hyson '71\*  
 Lynn Brown Kargman '64  
 Rebecca Kennedy  
 and James Kennedy

Margaret Schwingel Kraft '56\*  
 and Rudolph Kraft\*  
 Dorothy Page Kuehl '48\*  
 Chester K. Lasell  
 Jackie Hoffmeier Lee '68  
 Susan F. Lillywhite '67\*  
 Barbara Caron MacLean '66\*  
 Michael A. Maggiacomo  
 Gloria Boyd Major-Brown '44\*  
 Ann August Marcus '56  
 Bonnie Kamerdiner Marsano '67  
 Marisa L. Mascaro  
 MeadWestvaco Foundation  
 Arthur Menard  
 Dorothy Cooke Merchant '40  
 Katherine E. Meredith '94  
 M. Virginia Zipf Metzler '57\*  
 Millipore Foundation  
 Joan Deshefy Patenaude '57\*  
 Francis J. Perry, III  
 and Susan Perry  
 Jane A. Perry '50\*

Sybil Moore Pinkham '54\*  
 Catherine Nannery Rafferty '42  
 Alan H. Robbins  
 and Jerje Ann Robbins  
 Laurel Boyle Rose '69  
 Mr. & Mrs. Warren Sackman  
 Judith Tracy Shanahan '48 (d)\*  
 Ruth S. Shuman\*  
 Janet Whitten Smith '39\*  
 Marion Ettinger Steinmetz '50\*  
 Judith George Stephens '58\*  
 Marian Fitts Sternkopf '41\*  
 Nancy Peterson Strain '46\*  
 Barbara Schoppy Talarico '51  
 Linda Telfer '60\*  
 Texas Instruments Foundation  
 Katharine Urner-Jones '83\*  
 and Lawrence Jones  
 Tamara Bettcher Walker '78  
 Lynn Blodgett Williamson '46\*

\*denotes donors with 10+ years of consecutive support of Lasell's Annual Fund  
 (d) deceased



### Spotlight:

### Mary Hyson — Paying Forward

Mary Hobler Hyson '71 understands the importance of a supportive educational environment and believes strongly in giving back to the institutions that gave her encouragement and the opportunities to succeed.

"I struggled academically throughout my high school years at Princeton Day School but my teachers hung in there with me. I can't give them enough credit for all they did. When I arrived at Lasell I was amazed when classmates began asking me for help with the coursework. My self-esteem grew. I realized that once again, I was receiving the support of a very caring faculty."

Mary returned to Lasell for the first time since graduation for her 35th Reunion.

“I was so pleased to see how the campus has grown and how the College has developed its academic programs. As an alumna, I believe in paying back and paying forward. Everything contributes to where you land and nothing is ever lost.”

# LASELL GIVING CHALLENGE

## 2008-2009

The Lasell Giving Challenge resulted in over \$161,000 of new and increased gifts during the 2008-2009 Annual Fund program. With that total we met the challenge and secured the entire grant amount from Trustee Adelaide Shaffer Van Winkle '36/H'96.

### Anonymous

### Anonymous

Anonymous  
Sallyann Bartlett Abel '51  
Mary Anne DeSantie Abercrombie '75  
Mr. & Mrs. Richard Aberman  
Shirley Sherwood Adams '54  
Casey Alexander  
Mary Louise Burke Alexander '53  
Judy Caswell Allen '56  
Emily Alter  
Lucile Tucker Anderson '48

### Sally M. Andrews

Mr. & Mrs. Manuel J. Antunes  
Bonnie Baker Arnold '74

### Margaretta Arnold H'07

Pamela Arons  
Diane M. Austin  
Bette Young Avery '64  
Melisse Jenkins Bailey '59  
Pamela Porter Barefoot '65  
Norma Treiberg Barnidge '46  
Mr. & Mrs. Joseph Barreiro  
Janice M. Barrett  
Sandra Poole Bednarik '59  
Mr. & Mrs. Donald Belanger  
Stormy Horton Bell '92  
Nancy Shook Bender '56  
Linda Teich Bennett '60  
Kathryn Lockwood Benson '71

### Kathryn Johnston Berardi '71

Mr. & Mrs. Wayne Berliner  
Evelyn Berman  
Carole Grieve Bilafer '59  
Mr. & Mrs. Christopher Bishop  
Marjorie Olson Bjork '45  
Nancy B. Black '66  
Nancy Bailey Black '40

### Marjorie Ray Blackett '42

Lynn Blake  
Patti Lockwood Blanchette '56  
Beverly Landros Bley '64  
Rosamond McCorkindale Blizard '45  
Steven Bloom

Mary Wilson Boegel '71

### Linda Bailey Bolton '59

Boston Foundation  
Mr. & Mrs. Paul Brace  
Ann Van der Veer Bradley '51  
Jeanne Orcutt Brady '61  
Ruth Paetz Braun '54

### Jane Kremer Bray '60

Mr. & Mrs. Claudio Brocado  
Paula Colantuone Bross '78  
Priscilla Dow Brown '45  
Carolyn Wood Brox '59  
Linda S. Bruenjes  
Marie E. Brunninghaus

Elizabeth Ann Lindsay Buhler '54

Mona Carson Bumpus '49

Jane F. Cahill

Carolee Scribner Cain '56

Mr. & Mrs. Stephen J. Cameron

Charlotte Kelley Campbell '51

Janet Walker Cann '69

Janet Cannon '86

Elizabeth Burdick Cantarine '64

Mr. & Mrs. Thomas Caraccio

Jill Carey

Mr. & Mrs. Jeffrey T. Caron

Robert G. Carpenter

Elinor Lahive Carrera '84

Sara Rojas Casarella '54

### Urit Chaimovitz '98

Delores Raymond Chamberlain '59

Nancy Ferguson Chapman '59

Catherine L. Childs '89

Rita Keevers Clafin '54

Colette Cavanaugh Clark '66

### Rena Clark

Wendy L. Clarke '75

Mandi Bulette Coakley '81

Nancy Goodman Cobin '55

Nancy Crowell Coleman '59

Marjorie Reed Colley '36

Betsy Coulson Conrad '59

Karen Lord Conroy '59

Mr. & Mrs. Peter Conti

Kathleen H. Conway '69

Muriel Monroy Conway '77

and Patrick Conway

Carol Vincent Cook '60

Betty Fleer Cooper '44

Mr. & Mrs. Lincoln A. Cooper

Cynthia Plimpton Corbin '70

Patricia Ellis Corey '61

Constance Peterson Costigan '53

Mr. & Mrs. Phillip Cotnoir

Mr. & Mrs. Thomas L. Coughlin

Mr. & Mrs. Alan Craft

### Ada Burns Crampton '47

Cynthia Rardin Crawford '68

Ruth Turner Crosby '42/H'92

Sally Cabral Crowe '61

Joan Whitten Cummings '50

Victoria Curione

Dennis Curran

Joan Sastavickas Curtin '62

Susan Hulton Curtis '69

Michael J. Daley

Jane Carmody Davison '44

Carroll Spelke Dawson '59

George DeArment Trust

Mr. & Mrs. Sergio Deganis

Mr. & Mrs. James DeMieri

Sally Herman DeRosa '56

JoAnne DiPietro DiMarco '55

Mr. & Mrs. Phillip DiTommaso

Carol Juechter Dixon '57

Traci A. Doak

Julia Davidson Dobson '60

Richard D. Dodds, Jr.

and Jane Smalley

Jane Parsons Dolbier '61

Mary Ann Donahue '53

### Nancy Lawson Donahue '49/H'98

Elizabeth FitzGerald Donovan '66

### Marjorie Westgate Doran '37

Karen Daniels Dorney '59

Mr. & Mrs. James Dougherty

Joan Rabbitt Downey '54

### Elisabeth M. Drake

Nancy Rotman Duffy '59

Jean MacDonald Dulude '54

Pamela Ross Dunham '72

Mr. & Mrs. William Eberding

Rosemary Pellegrino Eichenfield '57

Jane Burnham Eliason '45

Lorraine Davies Ellerson '79

Arlene Kelly Erdman '51

Carol Swanson Evans '62

Eleanor Ayers Evans '38

Patricia Christian Evans '69

Betty Anderson Fairchild '58

Pamela Faria

Cynthia Rinklin Feigin '69

Judith Moss Feingold '62

Elizabeth C. Fenn '57

Mr. & Mrs. Steven Fernandez

Patricia Estabrook Filosi '72

Steffanie Kaplowitz Finn '89

Virginia Wollinger Fisher '61

Solomon Fleishman

Barbara Goodwin Flint '44

### Thelma Greenberg Florin '54

Haegan Forrest

and Kristen Forrest

Suzanne C. Fortin '79

Mr. & Mrs. David Foss

Jacqueline Dubin Foster '69

Jane Davis Franchot '69

Judith Barnstead Francis '59

### Karen Manchon Frank '71

Dr. & Mrs. Fred H. Frankel

### Dorothy Carl Franklin '44

Alexena Thun Frazee '70

Rosalie Frolick

Judith Sias Fudge '59

Donald R. Fulton

### Vivien Ash Gallagher '64

### Shirley Vara Gallerani '53

Alaina Galvin '06

### Jewell Ward Ganger '49

### Daniel R. Gant

Laura Heavey Gavel '92

Robert Gecht

Corinne A. Geist

Jasmin Mueller Gentling '62

Patricia Torbron Geoghegan '68

Ruth DeWitt Ghia '64

Joan Robilotto Gibson '50

Miriam Tappan Gilbert '40

Karen B. Gill

Nancy B. Gill '74

Camille Gillman '08

Mr. & Mrs. Douglas B. Gilson

Laura Glass '69

Linda Gagne Glasser '70

Ana Glavin

Jean Hopkins Goin '46

Muriel Stark Goldsmith '42

Sylvia Goodman

Shirley Dewis Gordon '50

Joanne Gullo Gormley '59

Rosamond Lees Gow '45

### Victoria Tenney Grabows '67

Tracy T. Grant '92

Rosanna Cafarella Greco '75

Sonia Altland Griffith '57

Jane Alford Grimson '49 (d)

and John M. Grimson, Sr.

### Marion Day Grosjean '57

Sandra Lund Groueten '60

Katharine Farnell Guay '39

Virginia Rolfe Guy '45

Mr. & Mrs. George F. Haase, Jr.

Barbara Snook Haggerty '48

### Priscilla Spence Hall '43

Laurie Craven Halpin '75

Marcia Corey Hanson '42

Genevieve G. Harold '55

Mr. & Mrs. Thomas M. Hart

### Helena Bentz Hartnett

### Susan Hass

Jacqueline Paulding Hauser '50

Mr. & Mrs. Constantine Haydock

### Jane Wadhams Hazen '49

Joan Raymond Healey '56

### Kathleen E. Hegenbart

Linda Soux Heller '69

Heidi Watkins Helwig '96

Constance Hatch Herron '38

Virginia Terhune Hersom '46

Deborah Hewitt-Skowera '74

Miriam Shurkin Heyman '67

Maureen A. Hitchins '73

Elaine Capone Hixon '47

Carol Rofer Hofmann '54

### Joan Dorau Hohorst '50

Marcelline Govoni Holtje '54

### George Hornig

Andrea Bischoff Houser '58

### Michael Hoyle

Mr. & Mrs. David Huhtala

Carol Slocum Hulse '59

Jean Mitchell Hunter '45

### Robert H. Huntington

### and Susan McCafferty

Elizabeth Baumbach Hyne '51

### Mary Hobler Hyson '71

Mr. & Mrs. Stephen M. Isherwood

Laura Jensen '61

Jean Hill Johnson '65

Lois DeCuollo Johnson '59

Rosalind Aulisi Jureller '59

Mr. & Mrs. John Kana

Maureen A. Kane '51

### Lynn Brown Kargman '64

Beverly French Keigwin '61

Janet Sheffer Kerney '69

Carol Cunningham Kihrtz '55

Nancy Shinnick Kinton '72

Anne DeArment Kleffel '65

Susan Humphreys Klein '64

Linda L. Koed '69

Thomas Koerber

Frances Nettleton Konsella '56

### Margaret Schwingel Kraft '56

### and Rudolph Kraft

Monica Fuchs Kramer '70

Joyce Freedman Kreppel '71

Leonora Coronella Krueger '53

Mary McCartney Kuhrtz '60

Naomi Kahrmanian Kuzoian '46

Mr. & Mrs. Tony Lafuente

Kerry Sullivan Lambert '74

### Clara Silsby Lamperti '50

Denise Landry-Horowitz

Joan Barry Lane '63

Dorothea Chung Lang '47

### Mr. & Mrs. David Langstaff

### Lemuel Lanier

Chester K. Lasell

Susan Bohner LaVista '72

Louise Harrison Leader '59

Kristina A. Leclaire '78

Barbara Ann Weidlich Lee '66

### Jackie Hoffmeier Lee '68

Marian E. LeFevre

Margaret Rebmann LeMasurier '67

Amy Donovan Lemon '80

Janet Conte Lewis '62

Lorraine Robsham Linn '43

Mr. & Mrs. Theodore Linstrum

Barbara Case Lipke '59

Mr. & Mrs. Henry Lisko

Kathryn Starkey Litehiser '42

Margaret Salzer LoCastro '69

Ann Bowerman Logan '54

Marilyn Manzke Loglisci '61

Mr. & Mrs. Mark A. Lombardi

Barbara Longe

Mr. & Mrs. Philip Lowe

Kathryn Morgan Lucey '67

Concetta R. Luppino '61

Corinne Coyle Lydem '54

Mr. & Mrs. Daniel MacIsaac

Janet White MacLure '49

Susan Hastings Mailloux '74

### Gloria Boyd Major-Brown '44

Camille Malamud

Jeannie Mammola



From everyone here at Lasell, we thank you and ask you to join us in expressing our deep appreciation to Adelaide for issuing the challenge. Thank you all for your support of the College.

Caroline Killam Moller '57  
Donna Terwilliger Moor '66  
**Mr. & Mrs. Charles E. Moran**  
Irene Tuttle Morine '63  
**Lela Graham Moses '61**  
**and Horace C. Moses, III**  
Linda Chiamonte Mount '60  
Winifred Northrup Mudge '42  
Eileen Kelley Murphy '82  
Jan-Marie Murray  
Marilyn A. Murray '76  
Judith Lipkins Ness '68  
Mr. & Mrs. John F. Nestor, III  
Helen Follansbee Nicita '72  
Judith Broggi Nicolosi '61  
Janet Gleason Nolan '53  
Mr. & Mrs. John P. Notarangelo  
Deborah Wells Nunes '72  
Mr. & Mrs. Thomas Nunn  
Alla O'Brien  
Jody Pardus O'Connor '77  
Kathleen M. O'Connor  
**Ellen S. Offner**  
Janet Nickerson Ogilvy '73  
Linda Wilson Olson '65  
Mary-Ida Hanson Olson '47  
Heather Orosco  
Mr. & Mrs. Lawrence Osier  
**James Ostrow**  
**and Christine Ostrow**  
Pamela Henderson Pagliaro '79  
Nancy Keach Paine '41  
Barbara R. Palmer '68  
**Paula DeAngelis Panchuck**  
Kathleen Hayes Panos '64  
Lynne Pantalao-Congdon '77  
Mr. & Mrs. Michael Pappas  
Cheryl Silvers Park '68  
Virginia Michelini Parks '54  
**Joan Deshefy Patenaude '57**  
Caroline C. Payson '67  
Jean Bohacket Pegram '41  
Margaret Walsh Pereira '73  
Anne Blake Perkins '46  
**Francis J. Perry, III**  
**and Susan Perry**  
**Jean Michael Petersen '39**  
Carolyn Coleman Peyrot '46  
Joyce Andrews Phelps '50  
Mr. & Mrs. Philip J. Pietrafitta, Jr.  
**John V. Pilitsis**  
Malini Pillai  
Dianne Tuzik Pingree '55  
Louise Plack  
Gail Edwards Pocock '67  
Dianne Polizzi  
Andrea Pontillo '05  
Mr. & Mrs. Arthur Powell  
Michelle L. Powers  
Margaret Robson Priddy '54  
Helen Wood Queenan '54  
Mr. & Mrs. Albert Quern  
Mr. & Mrs. John F. Rampa  
Mary Rader Randall '56  
Carolyn Snook Rauscher '50  
Iver S. Ravin  
Mr. & Mrs. John R. Redding

Joan Antun Rednor '50  
Gail Swanson Rees '55  
Bonnie A. Reimann '62  
Mr. & Mrs. John Reny  
Therese Ricci  
B. J. Stephenson Riedel '49  
Barbara Bickley Rieger '46  
**Alan H. Robbins**  
**and Jerje Ann Robbins**  
Clesson A. Robbins  
Marilyn Barette Roberts '58  
Dr. & Mrs. Steven L. Robinson  
Mr. & Mrs. William D. Rogers, Jr.  
Karen Crutchley Ronan '74  
Mr. & Mrs. Paul Rosin  
Kathleen Rebmman Royka '64  
Jane McKee Rozes '64  
Kathleen Rudnicki  
Jane Bishop Russell '41  
Mr. & Mrs. William Ryan  
Mr. & Mrs. Hasim Sabovic  
**Mr. & Mrs. Warren Sackman**  
Donna Brown Safran '68  
Myrna Ann Saltman '06  
Ann Bidwell Sanborn '57  
Helena L. Santos  
Margaret Benoit Sapia '77  
Stephen N. Sarikas  
**and Marlena Yannetti**  
Marguerite Nahigian Sarkisian '50  
Susan L. Schrade '72  
Mark Sciegaj  
Susan T. Searfoss '76  
Virginia Von Lynn Seavy '45  
Joan Polidor Selander '56  
Diana Neusner Shapiro '56  
**Elisse Allinson Share '65**  
**and Neil E. Share**  
Marie Pengue Sheets '79  
Ann Sherman  
Frances Mitchell Sherman '54  
**Ruth S. Shuman**  
Donna Whiteley Sieverts '64  
Dorothy Delasco Sines '51  
Orilla Shaw Skinner '50  
Frances Reid Smith '59  
**Janet Whitten Smith '39**  
Lee Smith '54  
Kathryn Turner Soucy '69  
Nancy Quattrocchi Soule '62  
Sally Remley Southmayd '62  
Eleanor Mackinnon Speh '66  
Lucille Wielandt Speight '41  
Dorothy Tobin Staffier '44  
**Jean Davies Stanley '50**  
Antoinette Ruinen Stapper '56  
**and Erik J. Stapper**  
**Judith George Stephens '58**  
**Nancy Peterson Strain '46**  
Joyce Goss Strickler '59  
Dorothy Ell Strong '36  
Anne Thiessen Sullivan '63  
Carol Bradley Sullivan '64  
Mr. & Mrs. Daniel Sullivan  
Mr. & Mrs. Timothy C. Sullivan  
Mary Kay Murray Sutton '47  
Patricia Graff Suydam '58

Mr. & Mrs. Richard Swahlan  
**Barbara Schoppy Talarico '51**  
**Linda Telfer '60**  
Janice Schuelke Test '46  
The Saunders Foundation  
Stephen Thein  
Margaret Schneider Thieringer '39  
Susan Marx Thompson '64  
Barbara Hilliard Tracey '55  
Lisa Otzel Turner '81  
Ann Sterner Tyler '68  
Marilynn Paganelli Ugalde '65  
Ronna Zucker Uhrman '60  
Amy S. Ullman '63  
**Katharine Urner-Jones '83**  
**and Lawrence Jones**  
Lee Dunstane Vandermark '64  
Dianne M. Veitch  
Judy A. Velletri '76  
Mr. & Mrs. Raphael Veve  
Mr. & Mrs. Enrique Viano  
Marion Blunt Von Heisermann '62  
Mary Jean Schultz Waddell '39  
Nancy R. Waldron  
Elizabeth Wissman Walendziewicz '68  
**Tamara Bettcher Walker '78**  
Martin Walsh  
Elizabeth Ward  
Pamela Manikas Washek '85  
**Joan Howe Weber '51**  
**Harriet Markham Wedeman '48**  
Janet A. Welch '54  
**Kathryn E. West**  
Catherine McShain White '59  
Susan Thomas Wiard '55  
Geraldine Weidman Wight '61  
Mr. & Mrs. Robert M. Wigmore  
Elane Lindstrom Williams '56  
Jane Robinson Williams '39  
Marianne Thomen Williams '70  
Carole Kirschner Wilson '61  
**Judith B. Wittenberg**  
**and Jack Wittenberg**  
Ann Douglass Wood '59  
Mr. & Mrs. William Woods  
**John Woodward**  
Dale Tufts Yale '68  
**Kyo Yamawaki**  
Barbara Billington Young '68  
Mr. & Mrs. Paul Young  
Tracey Connor Young '84  
Mary Alice Everett Yurko '55  
Lisa A. Zinman '99

## Bragdon Associates (\$500 - \$999)

Shirley Sherwood Adams '54\*  
Susan March Allen '63\*  
Diane M. Austin\*  
The Avon Family Foundation, Inc.  
Patricia Greenhalgh Barrows '48  
Virginia Thomas Baxter '39\*  
MaryAnn Mitchell Beaver '69\*  
Margaret Olson Belden '50\*  
Keith D. Bilezerian  
Nancy B. Black '66\*  
Beverly Landros Bley '64  
Ann Van der Veer Bradley '51  
Jean Campbell '44\*  
Elaine Vogel Cartland '72  
Nancy Goodman Cobin '55  
Nancy Crowell Coleman '59  
Nancy Van Deusen Connor '57\*  
Betty Fleer Cooper '44\*  
Cynthia Rardin Crawford '68  
Samir Desai  
**and Nilima Desai**  
Carol Juechter Dixon '57  
Jane Parsons Dolbier '61\*  
Joan Rabbitt Downey '54\*  
Carol Davis Fish '66\*  
Champe A. Fisher  
Mr. & Mrs. Gregory Gagne  
Nora Jean Ganslen '70\*  
Pamela Parker Gartin '70\*  
General Electric Foundation  
Elizabeth Backus Girard '60  
John M. Grimson, Sr.  
Sandra Lund Grouten '60  
Marcia Corey Hanson '42\*  
Anne Nancy Wells Harris '43\*  
Elizabeth Waters Hartman '47\*  
Heidi Watkins Helwig '96  
Carol Rofer Hofmann '54\*  
Sally Ishihara  
Jeanne A. Johnsen '72\*  
Patricia A. Johnson '42\*  
Anne DeArment Kleffel '65  
Janet Young LaCava '65  
Merrill Brown Lett '38\*  
Barbara Longe  
Angela Paolantonio Lowy '74  
Kathryn Morgan Lucey '67\*  
Eleanor Pfaff Martin '41  
Merrill Lynch & Co. Foundation, Inc.  
Reverend Roger C. Moulton\*  
Joan Sycle Norwitz '59\*  
Kathleen M. O'Connor\*  
Mary-Ida Hanson Olson '47\*  
Ruth Richardson Pease '30  
Jean Bohacket Pegram '41\*  
Pfizer Inc.  
Mr. & Mrs. Philip J. Pietrafitta, Jr.  
Susan P. Posner '67\*  
Barbara Bickley Rieger '46  
Clesson A. Robbins  
Marilyn Barette Roberts '58  
Ann Stern Russo '64\*  
Margaret Benoit Sapia '77  
Stephen N. Sarikas  
**and Marlena Yannetti**  
Mark Sciegaj  
Joan Polidor Selander '56  
Margot Bergstrom Semonian '50\*  
Barbara Berkman Sherman '42 (d)\*

Beverly Dansky Singer '58\*  
Priscilla Robbins Stahl '45  
Antoinette Ruinen Stapper '56\*  
Marilyn Crowell Stewart '42  
Arlene Wishart Sylvester '38\*  
Stephen Thein  
Betty Ann Mahoney Thernal '48  
Carolyn Reid Towne '58  
Merilyn Budlong Trocino '54  
Carolyn Lewis Tufts '47

## Lasell Associates (\$250 - \$499)

Anonymous  
Joseph Aieta, III\*  
Mary Louise Burke Alexander '53  
Judy Caswell Allen '56\*  
Pamela Arons  
Norma Treiberg Barnidge '46  
Linda Teich Bennett '60  
Lucile Merrill Birch '49  
Nancy Bailey Black '40  
Patti Lockwood Blanchette '56  
Betty Jean Jones Bolton '50\*  
Mary Florence Burke Brinn '53\*  
Betty McGrath Brown '41\*  
Linda S. Bruenjes  
Jane Trott Burgon '47\*  
Carolee Scribner Cain '56  
Hazel Schoppy Callahan '55\*  
Charlotte Kelley Campbell '51\*  
Shelley Carton '72  
Judith Littlefield Clark '56\*  
Betsy Coulson Conrad '59  
Martha Clark Corson '44\*  
Millicent Entwistle Crawford '47\*  
Sally Cabral Crowe '61  
Joan Whitten Cummings '50  
Joan Sastavicks Curtin '62  
Rosemary O'Brien deBelay '50  
Mr. & Mrs. James DeMieri  
Audrey Souther DesRoches '48  
Mary Ann Donahue '53  
Suzanne Saunders Doyle '59  
Karla Robinson Dunham '61\*  
Pamela Ross Dunham '72\*  
Pamela Faria  
Helen Woodward Fassett '40  
Haegan Forrest  
**and Kristen Forrest**  
Adrienne Franciosi  
Barbara Cole French '61\*  
Robert Gecht  
Miriam Tappan Gilbert '40  
Laura Glass '69  
Shirley Lewis Gordon '50\*  
Rosamond Lees Gow '45  
Rosanna Cafarella Greco '75  
Cynthia Boynton Green '59\*  
Mr. & Mrs. Irwin Gruverman  
Virginia Rolfe Guy '45  
Mr. & Mrs. George F. Haase, Jr.  
Genevieve G. Harold '55  
Joyce Davies Harrison '50  
Virginia Weeks Hatch '42\*  
Jean Mitchell Hunter '45\*  
Donna Ross Hurley '53  
International Business  
Machines Corporation  
Laura Jensen '61  
Lucinda Nolin Johnson '55/'77\*

\* denotes donors with 10+ years of consecutive support of Lasell's Annual Fund  
(d) deceased  
Bold faced indicate people who are Torchbearers or above

Mr. & Mrs. John Kana  
Maureen A. Kane '51\*  
Denise Koules Katsaros '67\*  
Beverly French Keigwin '61  
Susan Humphreys Klein '64  
Thomas Koerber  
Frances Nettleton Konsella '56\*  
Ruth Koritzky Kopelman '36  
Kraft Foods  
John F. Leonard  
Sharon K. LeVan '66\*  
Kathryn Starkey Litehiser '42\*  
Ann Bowerman Logan '54  
Elizabeth Reitman Lowenstein '66  
Nancy Smith Murray Sutton '47  
S. Lee Parker McBurnie '46\*  
Elizabeth Williams McGowan '47\*  
Mary Jane Magnusson Megroz '46  
Mobil Foundation, Inc.  
Ellen Margolis Monk '68  
Winifred Northrup Mudge '42  
Judith Lipkins Ness '68  
Frances Lee Osborne '48\*  
Nancy Deveno Pagano '68  
Carolyn Coleman Peyrot '46  
Joyce Andrews Phelps '50\*  
Dianne Tuzik Pingree '55  
Gail Edwards Pocock '67  
Patricia Perry Polidor '64\*  
Margaret Catalano Quigley '71\*  
Mr. & Mrs. John R. Redding  
Susan Sarris Redente '78  
Joan Antun Rednor '50  
Sally Quicke Reiss '56\*  
Phyllis Gleason Riley '52\*  
Jane McKee Rozes '64

Jane Bishop Russell '41\*  
Ann Bidwell Sanborn '57\*  
Ann Ashley Sanderson '49\*  
Helena L. Santos  
Lorraine E. Saunders '56  
Schering-Plough Foundation, Inc.  
Leah Smith Schneier '69  
Shell Oil Company Foundation  
Joan DeGelleke Shrewsbury '49\*  
Linda Werner Simon '64  
Dorothy Delasco Sines '51\*  
Frances Reid Smith '59  
Lee Smith '54\*  
Doris Stewart Sutton '51\*  
Mary Kay Murray Sutton '47  
Patricia Graff Suydam '58  
Carol Phalen Swiggett '56  
Katharine H. Taft '56\*  
Joan Plaskon Tatigian '58  
Patricia Brunner Thiede '47  
Margaret Schneider Thieringer '39  
Susan Marx Thompson '64  
Phyllis Burckett Ulicny '49\*  
Lee Dunstane Vandermark '64\*  
Verizon Foundation  
Marion Blunt Von Heisermann '62  
Elizabeth Wissman Walendziewicz '68  
Frances Oden Werly '47\*  
Jeanne Daniels Wheeler '39  
Catherine McShain White '59  
Evelyn Frye White '49\*  
Carole Kirschner Wilson '61  
Russell A. Winslow  
Virginia Fletcher Yagovane '62  
Anita Ramirez Zayas '60

## Founders Club (\$150 - \$249)

Sallyann Bartlett Abel '51  
Janice O'Brien Almond '50  
Emogene Starrett Anderson '49\*  
Patricia L. Anderson '47  
Mark Aronson  
Judith Ready Baird '61  
Pamela Porter Barefoot '65  
Mr. & Mrs. Joseph Barreiro  
Jeanne Franklin Bates '47\*  
Mr. & Mrs. Donald Belanger  
Nancy Shook Bender '56  
Kathryn Lockwood Benson '71  
Victoria Tennant Bettes '68  
Carole Grieve Bilafer '59  
Marjorie Olson Bjork '45  
Lynn Blake  
Rosamond McCorkindale Blizard '45  
Mary Wilson Boegel '71  
Ruth Paetz Braun '54  
Constance Cullman Broderick '53  
Carolyn Wood Brox '59  
Marie E. Bruninghaus  
Shirley Sturm Bullard '48\*  
Gail Winalski Burd '58\*  
Ellen Smith Burton '61  
Jane F. Cahill  
Mr. & Mrs. Stephen J. Cameron  
Mr. & Mrs. Thomas Caraccio  
Jill Carey  
Elinor Lahive Carrera '84  
Sara Rojas Casarella '54  
Lois Sawyer Caulfield '66\*  
Ruth Easterlind Cederberg '52\*

Mandi Bulette Coakley '81  
Nancy Gotz Cohn '59  
Sergio Collado  
Elizabeth Gorton Collier '43\*  
Carol Vincent Cook '60  
Cynthia Plimpton Corbin '70  
Mr. & Mrs. Thomas L. Coughlin  
Nancy Cromer-Grayson '69  
Victoria Curione  
Janet Guertin Daigle '77\*  
Judith Gardner Davis '53  
Carol Haye Deal '50  
Mr. & Mrs. Sergio Deganis  
Sally Herman DeRosa '56  
Julia Davidson Dobson '60  
Laureen Doescher  
Karen Daniels Dorney '59  
Carol Failla Doughman '60  
Joan Schaefer Douglas '50  
Sally A. Drachman  
Frances Peters Dunlevy '52\*  
Mr. & Mrs. William Eberding  
Anne Alger Ehrlich '47\*  
Rosemary Pellegrino Eichenfield '57  
Jane Burnham Eliason '45  
Barbara Hammett Elkinton '55  
Eleanor Ayers Evans '38  
Shirley Greenhalgh Fadley '49\*  
Judith Moss Feingold '62  
Patricia Estabrook Filosi '72  
Virginia Wollinger Fisher '61  
Sharon Carley Fitts '62\*  
Barbara Goodwin Flint '44  
Carolyn Powers Fontaine '52\*  
Suzanne C. Fortin '79  
Dr. & Mrs. Fred H. Frankel

Donald R. Fulton  
Althea Janke Gardner '53  
Janet Muir Garrity '65\*  
James W. Gentles  
Patricia Torbron Geoghegan '68  
Ruth DeWitt Ghia '64  
Joan Robilotto Gibson '50  
Nancy B. Gill '74  
Gail Seibert Glover '58\*  
Jean Walters Goble '42\*  
Muriel Stark Goldsmith '42  
Sylvia Goodman  
Sandra Reynolds Grant '54\*  
Barbara Birnbaum Green '45  
Sonia Altland Griffith '57  
Karen Smith Grover '62\*  
Helen Peters Guy '55\*  
Barbara Carberry Haddad '61\*  
Barbara Snook Haggerty '48  
Elizabeth Andrews Haidet '72\*  
Laurie Craven Halpin '75  
Marilyn Morse Harris '50  
Anita Triantafel Hatzis '47  
Jacqueline Paulding Hauser '50\*  
Florence Keeney Havens '48\*  
Carol Boisen Hawley '70  
Virginia Klenske Hersom '51\*  
Linda Soux Heller '69  
Mary Miller Henrique '52  
Constance Hatch Herron '38  
Virginia Terhune Hersom '46  
Phyllis Haviland Hildebrandt '47\*  
Augusta Williamson Hopkins '37  
Andrea Bischoff Houser '58  
Theresa Bergeron Hoyt '45\*  
Melissa Smith Hubbard '68\*  
Ann Harris Hughes '55\*  
Mr. & Mrs. David Huhtala  
Priscilla Lane Jarman '62  
Donna Garrow Johnson '67\*  
Kathleen Moshure Johnson '66  
Lynne Giffen Keener '63\*  
Beverly Splitt Keller '48  
Vesta Horton Kent '47  
Carol Cunningham Kiley '55  
Linda L. Koed '69\*  
Barbara Trout Krohn '52  
Leonora Coronella Krueger '53\*  
Naomi Kahrmanian Kuzoian '46  
Linda Salvati Ladd '64  
Judith Noveck Lamoin '67\*  
Joan Barry Lane '63  
Dorothea Chung Lang '47  
Kristina A. Leclaire '78  
Barbara Ann Weidlich Lee '66  
Suzanne Palmer Lee '54\*  
Kathleen Loeb-Schwab '70  
Mr. & Mrs. Mark A. Lombardi  
Audrey MacAdam Lowe '57  
Jacqueline Pfeiffer Lueth '48  
Corinne Coyle Lydem '54  
Mr. & Mrs. Daniel MacIsaac  
Janet White MacLure '49\*  
Patricia Washburn Mancivalano '64\*  
June Carew Mange '44  
Noel Temple Manning '42  
Theresa Kilgore Mannix '56  
Marsha Singer Marshall '58  
Priscilla Freeman Martin '51  
Janet Eaton Maynard '45  
Janice McGoughran '50  
Patricia Bixby McHugo '43

## Spotlight: A Foundation Built by Donors

The Annual Fund is the cornerstone of Lasell College's financial foundation and a major priority of our fundraising programs. The generosity of our many donors helps to make Lasell the unique and dynamic place we know it to be. Lasell students immerse themselves in this vibrant and exciting campus, receiving an excellent and comprehensive education. Gifts to the Annual Fund are transformational, making possible our beautiful campus, enhanced research materials, updated technologies, and resources for grants and financial aid. Donor support builds pride and a sense of ownership among the entire Lasell community.



\* denotes donors with 10+ years of consecutive support of Lasell's Annual Fund  
(d) deceased  
Bold faced indicate Torchbearers or above

Carol Healy McKinnon '61\*  
 Susan Sydow Mitchell '61\*  
 Barbara Stickle Mode '47  
 Caroline Killam Moller '57  
 Donna Terwilliger Moor '66  
 Nancy J. Morrison '68  
 Muriel Webb Moyer '52  
 Madeline Vivian Murphy '41\*  
 Doris Fern Musselman '42\*  
 Betty Lou Shattuck Musser '51\*  
 National Grid  
 Mr. & Mrs. John Nestor, III  
 Judith Broggi Nicolosi '61  
 Caroljean Somers Ogradnik '55\*  
 Linda Wilson Olson '65  
 Nancy Keach Paine '41  
 Gloria Sylvia Paoella '47\*  
 Virginia Michelini Parks '54  
 Frances Shepard Pilkington '39\*  
 Malini Pillai  
 Playboy Foundation  
 Andrea Pontillo '05  
 Martha Wright Potter '65  
 Mr. & Mrs. Arthur Powell  
 Joanne Harrington Price '50\*  
 Audrey McKay Prince '52\*  
 Helen Wood Queenan '54  
 Carolyn Snook Rauscher '50  
 Joy Stewart Rice '55\*  
 Carol Corning Richard '56\*  
 Esther Snowden Richmond '50\*  
 Christine Flach Ristaino '71  
 Elaine Orth Rodey '50\*  
 Mr. & Mrs. Paul Rosin  
 Joan Walker Runge '46\*  
 Barbara Jankowski Rusch '51\*  
 Mary Elizabeth Allen Ryan '41\*  
 Joan Warriner Ryder '47  
 Donna Brown Safran '68  
 Marguerite Nahigian Sarkisian '50  
 Ruth Eastman Schlichting '45\*  
 Deborah Kimerling Schneider '70\*  
 Susan Schnelwar '69  
 Susan T. Searfoss '76  
 Jo Ann Brooks Shaffer '50  
 Ruth Meyrowitz Shaw '43\*  
 Marie Pengue Sheets '79  
 Ann Sherman  
 Faye Wadhams Smith '38\*  
 Lucille Wielandt Speight '41  
 Carrol McKay Stephens '60  
 Elizabeth Schwingel Sullivan '61\*  
 Mr. & Mrs. Richard Swahlan  
 Betty Culver Thomson '48\*  
 M. Virginia Webb Tompkins '37\*  
 Barbara Hilliard Tracey '55  
 M. Elaine Quavillon Tull '51\*  
 Ann Sterner Tyler '68  
 Ronna Zucker Uhrman '60  
 Mr. & Mrs. Enrique Viano  
 Theodore A. von Glahn, Jr.\*  
 Vulcan Materials Company  
 Sandra Bristol Walters '57  
 Mary Waterman Weaving '55  
 Janet A. Welch '54  
 Helen A. Wetherbee '50\*  
 Geraldine Weidman Wight '61  
 Mr. & Mrs. Robert M. Wigmore  
 Jane Robinson Williams '39  
 Elizabeth Shurtleff Winter '70\*  
 Wendy Wolfenden '61  
 Ann Douglass Wood '59

Mr. & Mrs. William Woods  
 The Xerox Foundation  
 Mr. & Mrs. Paul Young  
 Tracey Connor Young '84  
 Mary Alice Everett Yurko '55

## 1925

Martha Fish Holmes

## 1930

Ruth Richardson Pease

## 1931

Norma Keller Coulthart

## 1932

Katherine Hartman Macy\*

## 1933

Louise Newell Audette  
 Sybil Thomas Ryder

## 1934

Carol Morehouse Jones  
 Bettina Potter Jeffrey\*

## 1935

Lydia Barnes Smith  
 Harriet Colwell Reeves  
 Dorothy Quade Shetter

## 1936

Blanche Bourke Crabb **(d)\***  
 Dorothy Ell Strong  
 Phyllis Gunn Rodgers  
 Ruth Koritzky Kopelman  
 Marjorie Reed Colley  
**Adelaide Shaffer Van Winkle\***  
 Ruth Upham Petremont\*

## 1937

Irene Dreissigacker Brimlow\*  
 Edith Fitzgerald Arnold\*  
 Priscilla Greig Linnell  
 Constance Griffin Lehoux\*  
 Jean Pratt Sanborn  
 Meredith Tillotson Richardson  
 M. Virginia Webb Tompkins\*  
**Marjorie Westgate Doran\***  
 Elizabeth Ann Wisdom  
 Elizabeth York Anderson\*

## 1938

Eleanor Ayers Evans\*  
 Merrill Brown Lett\*  
 Penny DeLaney Ogrinz\*  
 Constance Hatch Herron  
**Elizabeth Leland Kibbe\***  
 Myrtle Sylvester Ensor  
 Faye Wadhams Smith\*  
 Arlene Wishart Sylvester\*

## 1939

Mary Curtin Duane  
 Jeanne Daniels Wheeler  
 Katharine Farnell Guay\*  
 Louise A. Johnson  
**Jean Michael Petersen\***  
 Cora Pratt Adams  
 Jane Robinson Williams\*  
 Margaret Schneider Thieringer  
 Mary Jean Schultz Waddell  
 Frances Shepard Pilkington\*  
 Virginia Thomas Baxter\*  
 Winifred Trudeau Foskett\*  
**Janet Whitten Smith\***  
 Laurie Wilson Wightman

## 1940

Nancy Bailey Black\*  
 Marguerite Bird Thursland\*  
 Emily Bonney Couper  
 Marjorie Borden Hayward  
 Ruth Bowman Burrough  
**Dorothy Cooke Merchant**  
 Pauline DiTullio Monaco  
 Elizabeth English Anderson  
 Marion Gray Persons  
**Lucy Harrison Eimer\***  
 Janet Hayton Jewett  
**Jeanne Hubbard Brooks\***  
 Sibyl Lander Labonte  
 Doris Somerville Krom  
 Miriam Tappan Gilbert  
 Helen Woodward Fassett\*

## 1941

Mary Elizabeth Allen Ryan\*  
 Katherine Annino D'Andrea  
 Jane Bishop Russell\*  
 Jean Bohacket Pegram\*  
 Nancy Bommer\*  
 Persephonea Chumbanis Kantarges  
 Jean Cooney Leitch  
 Ilene Derick Whelpley\*  
 Elisabeth Dungan Norden  
**Marian Fitts Sternkopf\***  
 Lora Green Moses  
 Meredith Ingalls Geary\*  
 Nancy Keach Paine  
 Karolyn A. Kemp  
 Ellen Marron Hochmuth\*  
 Ruth Mattson Swanberg  
 Betty McGrath Brown\*  
 Eleanor Pfaff Martin\*  
 Madeline Vivian Murphy\*  
 Lucille Wielandt Speight\*

## 1942

Elizabeth S. Allen  
 Jean Barnes\*  
 Barbara Berkman Sherman **(d)\***  
 Ruth Bowlend Eckhoff  
 Doris Bracher Jenkins\*  
 Charlotte Bragg Burke\*  
 June Cherry Bruns\*  
 Marcia Corey Hanson\*  
 Marilyn Crowell Stewart  
 Jessie Dobson Salmon\*  
 Doris Fern Musselman\*

Dorothea F. Godfrey\*  
 Nancy Gorton Ross  
 Dorothy Higson White  
 Nina Hobson Mellor  
 Patricia A. Johnson\*  
 Beatrice Lewis Potter  
 Dorothy Lutz Fowler  
 Anne MacNeil Darrel  
 Dorothy Mosher Stone  
**Catherine Nannery Rafferty**  
 Winifred Northrup Mudge\*  
**Marjorie Ray Blackett\***  
 Elaine Robins Albert\*  
 Barbara Rockwell Carlstrand\*  
 Gertrude Ruch Kauffman\*  
 Mary Sheehan Bimmler  
 Peggy Smitt Frank  
 Muriel Stark Goldsmith\*  
 Kathryn Starkey Litehiser\*  
 Noel Temple Manning  
 Ruth Turner Crosby  
 Jean Walters Goble\*  
 Virginia Weeks Hatch\*

## 1943

LaVerne Atno Olson  
 Jean Behrle Wagner\*  
 Patricia Bixby McHugo\*  
 Margaret Bosworth Logee  
 Jean Burroughs Rawson  
 Mary Louise Gloeckler Millar  
 Elizabeth Gorton Collier\*  
 Edith Harrington Harcum  
 Nancy Leavis Bailey  
 Edna Lyons Cray  
 Ruth Meyrowitz Shaw\*  
 Dorothy Mitchell Patti\*  
 Florence Pechilis Caramihas\*  
**Ann Preuss Gillerlain\***  
 Jeanne A. Revene\*  
 Lorraine Robsham Linn  
 Esther Roth Garbe  
 Barbara Seward Hood  
 Virginia Shaw\*  
**Priscilla Spence Hall\***  
 Rosemary Staples Conard\*  
 Ruth Tillotson Murtha  
 Elaine Towne Burlingame  
 Carol Wadhams Wolcott  
 Anne Nancy Wells Harris\*

## 1944

**Ruth Blaisdell Simmons\***  
**Gloria Boyd Major-Brown\***  
 Jean Campbell\*  
 June Carew Mange  
**Dorothy Carl Franklin**  
 Jane Carmody Davison  
 Martha Clark Corson\*  
 Gloria Clifford Gifford\*  
 Katherine Cogswell Darnton  
 Grace Crossland Spurr **(d)**  
 Natalie B. Dowse\*  
 Jacqueline Eldridge Holihan\*  
 Betty Fleer Cooper\*  
 Barbara Goodwin Flint  
 Shirley Haviland Woody  
**Carol Hill Hart\***  
 Eleanor Laing Greenhalgh-Kilty\*  
 Claire McCreery Simmons\*

Myrtle Morrill Spann  
 Rosalie Paddison Wentworth  
 H. Frances Pariseau Ouellette\*  
 Elizabeth Shellenback Riedy  
 Ruth Skinner Bauer\*  
 Rosamond Smith Busboom  
 Betty Strickler Mertz\*  
 Dorothy Tobin Staffier  
 Natalie Vogel Lawton\*

## 1945

Lorraine Anderson Crabtree\*  
 Nancy Bacon Johnson  
 Marjorie Beebe Dill  
 Theresa Bergeron Hoyt\*  
 Barbara Birnbaum Green  
 Eleanor Bradway Lammers\*  
 Jane Burnham Eliason  
 Jane Calderwood Price\*  
 Janet Chesson Hale  
 Gloria Condon Delmolino\*  
**Eugenia Cooney Glow**  
 Bernice Coyne Boon\*  
 Dorothy Domina Willard **(d)\***  
 Priscilla Dow Brown  
 Ruth Eastman Schlichting\*  
 Janet Eaton Maynard  
 Marilyn Ford Marsh  
 Nancy Gregg Kellas  
 Carol Hauber Mitchell  
 Dorothy Holman Rich  
 Harriet Klebenov Canavan\*  
 Rosamond Lees Gow\*  
 Elaine Macdonald Aldrich\*  
 Marjorie McCabe Walker  
 Rosamond McCorkindale Blizard  
 Marilyn McNie Middlebrook  
 Jean Mitchell Hunter\*  
 Marion Munro Waitt\*  
 Marjorie Olson Bjork\*  
 Ann Parker Spaulding  
 Isabel Pollard Oleson  
 Eunice Powers Buxton\*  
 Barbara Preuss Reynolds\*  
 Priscilla Robbins Stahl\*  
 Virginia Rolfe Guy  
 Annette Saacke Cherry\*  
**Susan Slocum Klingbeil\***  
**Martha Stonebraker Ely\***  
 Ruth Sudhoff Sutherland  
 Althea Taylor Goldberg  
 Virginia Von Lynn Seavy\*  
 Doris Winkemeier Dieffenbach\*

## 1946

Barbara Bickley Rieger  
 Anne Blake Perkins\*  
**Lynn Blodgett Williamson\***  
 Raemary Chase Duryea\*  
 Carolyn Coleman Peyrot  
 Dorothy Crathern French  
 Doris Crocker Easter\*  
 Marilyn Dickson Liebguth\*  
 Constance DiPietro Lenge  
 Marjorie Fuller Wagoner  
 Margaret Hale Sawyer\*  
 Joan Hanson Blake\*  
 Barbara Harris Ryan  
 Audrey Hill Kennison  
 Jean Hopkins Goin

\* denotes donors with 10+ years of consecutive support of Lasell's Annual Fund  
**(d)** deceased

Bold faced indicate people who are Torchbearers or above



Naomi Kahrmanian Kuzoian\*  
 Florence Lewis DuBois  
 Elizabeth MacDonald Anderson  
 Mary Jane Magnusson Megroz  
 Marjorie Mosher Masch  
 Dorothy Nelson Whiting\*  
 S. Lee Parker McBurnie\*  
**Nancy Peterson Strain\***  
 Muriel Ross Benshimol\*  
 Lucille Sahakian Davies  
 Janice Schuelke Test\*  
 Betty Scrimgeour Williams\*  
 Priscilla Scruton Fuller\*  
 Betty Simmons Kurkulos  
 Nan Somerville Blowney\*  
 Virginia Terhune Hersom  
 Jean Thiel Weld  
 Norma Treiberg Barnidge  
 Janet Vaill Maus  
 Joan Walker Runge\*  
 Jean Watson Wetrich  
 Betty Wilks Hulbert\*

## 1947

Anne Alger Ehrlich\*  
 Priscilla Ames Ruggles  
 Patricia L. Anderson\*  
 Mary Brown Gorman\*  
 Patricia Brunner Thiede  
**Ada Burns Crampton\***  
 Elaine Capone Hixon  
 Dorothea Chung Lang\*  
 Nancy Collett Hendricks  
 Millicent Entwistle Crawford\*  
 Jeanne Franklin Bates\*  
 Mary-Ida Hanson Olson\*  
 Phyllis Haviland Hildebrandt\*  
 Janice Hayden Cummins  
 Joyce Hayes Whitman  
 Vesta Horton Kent\*  
 Genevieve Hurley Cummings\*  
 Marianne Kochli Andrews\*  
 Linda Koempel Tompkins  
 Joanna Lamb Kingsley\*  
 Carolyn Lewis Tufts  
 Joanne McMillan Mars\*  
 Mary Kay Murray Sutton\*  
 Frances Oden Werly\*  
 Joan Staples Feibel\*  
 Barbara Stickle Mode  
 Gloria Sylvia Paoella\*  
 Anita Triantafel Hatzis\*  
 Jane Trott Burgon\*  
 Beverly Tucker Bowen\*  
 Sally Waring Buffinton\*  
 Joan Warriner Ryder  
 Elizabeth Waters Hartman\*  
 Doris Wemmell Still  
 Elizabeth Williams McGowan\*

## 1948

**Freda Alexander\***  
 Virginia Bailey McAllister\*  
 Joanne Bossi True  
 Virginia Bowers Noyes\*  
 Elaine Burrell King\*  
 Roberta Cohan Shack  
 Hazel Comeau Hicks\*  
 Betty Culver Thomson\*  
 Barbara Cumming Hadley\*

Ann Cummings Clark\*  
 Betsy Jane Curtis Winquist\*  
 Barbara Davis Whipple\*  
 Paula Drake Hodgdon\*  
 Carol Galligan Massard  
 Patricia Greenhalgh Barrows  
 Virginia Hall Anderson  
 Florence Keeney Havens\*  
 Ellen Kenerson Gelotte\*  
 Linnea Kneller Mix\*  
 Nancy Larsen Bailey\*  
 Frances Lee Osborne\*  
 Betty Ann Mahoney Thernal\*  
**Harriet Markham Wedeman\***  
 Ruth Marvin Nicholas  
 Lois McLucas Martin\*  
 Mayanne Murray Lynch  
 Ann Myers Beck\*  
**Dorothy Page Kuehl\***  
 Jacqueline Pfeiffer Lueth  
 Mary Rogan Finn\*  
 Marjorie Santerson Barrett\*  
 June Sherter Krevor  
 Cynthia Smith Loeper-Wallace\*  
 June Smith Noreen\*  
 Barbara Snook Haggerty\*  
 Audrey Souther DesRoches\*  
 Beverly Splitt Keller\*  
 Barbara Street Berry\*  
 Shirley Sturm Bullard\*  
**Judith Tracy Shanahan (d)\***  
 Ann Truex Dickinson\*  
 Lucile Tucker Anderson\*  
 Muriel Ward Owler  
 Dorothy Whittmore Schlobohm\*  
 Alice Wilson McKinley  
 Dolores S. Winslow\*  
 Gloria Wurth Harrison

## 1949

Jane Alford Grimson **(d)\***  
 Delores Anderson Musgrave  
 Shirley Anderson Daly  
 Ann Ashley Sanderson\*  
 Phyllis Burckett Ulicny\*  
 Corinne Capone McGuiggan\*  
 Mona Carson Bumpus  
 Nancy Colman Hill  
**Nancy Curtis Grellier\***  
 Joan DeGellecke Shrewsbury\*  
 Ann Fletcher Simonds  
 Marie Foster Elmer  
 Joan Franzosa Leland  
 Evelyn Frye White\*  
 June Gray Taylor  
 Shirley Greenhalgh Fadley\*  
 Ann Hollett Munro\*  
 Elizabeth Honywill Horgan\*  
 Martha Hurd Davenport\*  
 Nancy Irwin Van Dorn  
 Anne Kendall Baldacci  
 Natalie Knight Rogers\*  
 Eeva Laitinen Stromski  
**Nancy Lawson Donahue\***  
 Dorothy Lindstrand Magnuson  
 Joan Lockwood Cutter  
 Nancy Macdonough Jennings  
 Polly Martini Baglieri  
 Mary Louise Masten Benson  
 Patricia McCarthy Treat\*  
 Lucile Merrill Birch

Barbara Milne Lynch\*  
 Ann Mitchell Van Deusen  
 Ellen Morris Phillips  
 Shirley Olesen Somes **(d)\***  
 Norma Pickett Wise  
 Patricia Quirk Jones\*  
 Eleanor Ritchie Elmore\*  
 Joan Rycroft Lowell  
 Carolyn Shailer Irizarry  
 Meredith Sisson Wannie  
 Emogene Starrett Anderson\*  
 B. J. Stephenson Riedel  
**Jane Wadhams Hazen\***  
**Jewell Ward Ganger\***  
**Joan Weiler Arnow\***  
 Janet White MacLure\*  
 Boydes Wilson Smith\*  
 Joan Wolfe Wickham  
 Dorothea Zuschlag Torgersen\*

## 1950

Joyce Andrews Phelps\*  
 Anita Angelus Kouloupoulos\*  
 Joan Antun Rednor\*  
 Janet Bell Luening\*  
 Margot Bergstrom Semonian\*  
 Jo Ann Brooks Shaffer  
**Nancy Burrows Putnam\***  
 Cynthia Butler Barnes\*  
 Anne Carpenter Towle\*  
 Nancy Copeland  
 Mary Jane Corrallo Noel  
 Naomi Cox Santoro  
**Jean Davies Stanley\***  
 Joyce Davies Harrison  
 Shirley Dewis Gordon\*  
 Mary Claire Dodge Davis\*  
**Joan Dorau Hohorst\***  
 Gloria Drulie Schluntz\*  
 Mary Louise Dunham Weyand\*  
**Marion Ettinger Steinmetz\***  
 Diana Ewing Bowser\*  
 Janet Foley\*  
 Nancy Frank Marks  
 Clare Gammons McMullan\*  
 Corinne Graham Gordon  
 Joy Gustavson Smith  
 Joanne Harrington Price\*  
 Carol Haye Deal  
 Betty Jean Jones Bolton\*  
 Ariel Leonard Robinson  
 Lois Lincoln Dugdale  
 Elizabeth MacInnes Deal\*  
 Marjorie Martin Allen  
 Anne Mastin Egner\*  
 Joanne McDonald Prouty  
 Janice McGoughran  
 Joan McKinney Aldrich  
 Barbara McNeish Mancuso  
 Marilyn Morse Harris\*  
**Janet Murphy George\***  
 Marguerite Nahigian Sarkisian\*  
 Nancy Nelson Weiss  
 E. Anne Nettleship Teets\*  
 Ellen O'Brien Montemurro  
 Janice O'Brien Almond  
 Rosemary O'Brien deBelay  
 A. Christine Oliveto Davis  
 Margaret Olson Belden\*  
 Elaine Orth Rodey\*

Jacqueline Paulding Hauser\*  
**Jane A. Perry\***  
 Marion Ribarich Connick  
 Joan Robilotto Gibson\*  
 Ruth Rosebrock Tobias\*  
 Carmen Santo Grimshaw\*  
 Joan Schaefer Douglas\*  
 Lois Schaller Toegemann\*  
 Iris Schofield McDonough  
 Orilla Shaw Skinner\*  
**Clara Silsby Lamperti\***  
 Carolyn Snook Rauscher\*  
 Esther Snowden Richmond\*  
 Jacquelyn Temperley Jennings\*  
 Beverly Walker Ward\*  
 Joan Wallace Billings  
 Helen A. Wetherbee\*  
 Joan Whitten Cummings  
 Nancy A. Wilson  
 Jean Woods McNeilly\*

## 1951

Kathrine Aslanian Sivazlian\*  
 Kathleen Ballard Heck\*  
 Sallyann Bartlett Abel\*  
 Elizabeth Baumbach Hyne\*  
 Dorothy Delasco Sines\*  
 Libbie Fleet Glazer  
 Janet Fornoff Hauber\*  
 Priscilla Freeman Martin  
 Nancy Green Curry  
**Shirley Hannafin Adams\***  
**Joan Howe Weber**  
 Barbara Jankowski Rusch\*  
 Jean Johnson Knowlton\*  
 Maureen A. Kane\*  
 Charlotte Kelley Campbell\*  
 Arlene Kelly Erdman  
 Jean Kilgore Owen\*  
 Charlotte Killam Wild  
 Virginia Klenske Heard\*  
 Marie Kohaut Dougherty  
 Cynthia Leibert Lay\*  
 Margaret MacDonald Doherty  
 Dorothy McPherson Wickersham  
 Barbara McRoberts Collingwood\*  
**Joanne Monahan Garrity\***  
 Beverly Pink Reynolds  
 Patricia Preble Robison\*  
 M. Elaine Quavillon Tull\*  
 Patricia Raeder Crone\*  
 Nancy Roetting Clifford  
**Barbara Schoppy Talarico**  
 Harriet Schwarz Ryan  
 Joanne Seremeth Teague  
 Betty Lou Shattuck Musser\*  
 Marcia Staats Lusardi  
 Isabell Stanley Davis  
 Doris Stewart Sutton\*  
 Janet Underwood Wall  
 Ann Van der Veer Bradley  
**Jo-Ann Vojir Massey\***  
 Barbara Walsh Patterson **(d)**  
 Nancy Webb Canepa  
 Joyce Weitzel Flanagan  
 Janice Weyls Moore\*  
 Mary Jane White Miller-Puckett\*  
 Joan Williams Arnold  
 Jeanine Wortman Post\*

## 1952

Nancy Allen Banks  
 A. Lois Armstrong Howland  
 Alice Baker Alexander  
 Vilma Barbuto Herrick\*  
 Diane Benfield Foye\*  
 Peggy Bostwick Farnsworth  
 Joyce Carroll Mulcahy  
 Chloe Comstock Singarella\*  
 Ruth Easterlind Cederberg\*  
 Marianna Firebaugh Burgund  
 Betty Lou Foy Reid\*  
 Ina Friedman Steinhauser  
 Bernadine Gill Smith\*  
 Phyllis Gleason Riley\*  
 Elizabeth Griffin Wetzel  
 Mary Grill Turton\*  
 Ruth Kohn Gross  
 Nancy Marcus Golden  
 Audrey McKay Prince\*  
 Carol Michiels Dunlap  
 Mary Miller Henrique  
 Patricia Moulton Cudmore\*  
 Carolie Painter Wildrick  
 Geraldine Paulmier Hazell\*  
 Naomi Peck Kroner  
 Frances Peters Dunlevy\*  
 Carolyn Powers Fontaine\*  
 Joeyna Raynal Rearwin\*  
 Barbara Sieder Treadway  
 Virginia Smibert Swanson  
 Virginia Snedaker Marshall\*  
 Barbara Trout Krohn  
 Mary Violet Retinas  
 Dorothy Webb Slack  
 Muriel Webb Moyer  
 Mary Lou Woodward Robinson\*

## 1953

Margaret Angus Christman\*  
 Carol Bridgetts Cadmus\*  
 Eva Bunzel Bulman  
 Mary Florence Burke Brinn\*  
 Mary Louise Burke Alexander  
 Janet Chase Ash\*  
 Elinor Cohen Goldman  
 Mary Lou Cooke MacKnight\*  
 Jane Corbin Post  
 Leonora Coronella Krueger\*  
 Louise Crank Graham  
 Constance Cullman Broderick  
 Joan Darelus Chirnside\*  
 Marilyn Davis Comins  
 Louise Dawe Turner  
 Jean DiFrancesco Ruland  
 Marie DiSilva Stocki\*  
 Mary Ann Donahue  
 Evelyn Earle Lukeman  
 Maureen Fagan Hollfelder\*  
 Karen Floberg Levis  
 Judith Gardner Davis\*  
 Shirley Gibbons San Soucie\*  
 Janet Gleason Nolan  
 Ruth Henning Sump  
 Barbara E. Howell\*  
 Althea Janke Gardner  
 Nancy Kittell Martin-Johnson\*  
 Elsie Knaus Klemt\*  
 Audrey Lang Clark **(d)\***  
 A. Cynthia McCoy Fairweather\*

\* denotes donors with 10+ years of consecutive support of Lasell's Annual Fund  
**(d)** deceased

Bold faced indicate Torchbearers or above

Carol Moriarty Phleger\*  
Janet Pearson Hauck\*  
Constance Peterson Costigan  
Sylvia Pfeiffer Nessleringer\*  
Ann Pockwinse Fudge  
Jeanette Roberts Mann\*  
Donna Ross Hurley  
Audrey Thompson Rielle\*  
Joy Ufford Penderville\*  
**Shirley Vara Gallerani\***  
Joan Wilckens Pitts\*  
Virginia Wilder Melitz\*  
Nancy Yager Weller

## 1954

Grace Adamian Aznoian  
Barbara Adams Owen  
Mary Allen Saunders  
Nancy Atwood Cook\*  
Ann Bowerman Logan  
Merilyn Budlong Trocino  
Ann Chidsey Moebius  
Susan Cluett LaGrange\*  
Corinne Coyle Lydem\*  
Annette Dufton Daggy  
Hope Duguid Dauwalter\*  
Karna Erickson Feltham\*  
Cynthia Fisher MacDonald  
Patricia Flett Lowe  
Marcelline Govoni Holtje  
**Thelma Greenberg Florin\***  
Marilyn Hardacre Sell  
Faith Harvey Fisler\*  
Janet Hatch Hamilton\*  
Judith Hansen\*  
Frances Hayden Stack  
Mary Hayden Durkee\*  
Priscilla Head Davis\*  
Nancy P. Horton\*  
Nancy Husted Koerner\*  
Susan Johnson Keane  
Rita Keevers Claflin  
Anne Kempel Green  
Ann Kennedy Duncan\*  
Joy Lanner Left  
**Elizabeth Ann Lindsay Buhler\***  
Roberta Loud Huh  
Marian Lougee Foster

Jean MacDonald Dulude  
Carolyn Marino Zentmaier  
Jeanette Marvin Brown\*  
Carole Mattucci Wall  
Mary McCulloch Bush  
Judith Messier Howard\*  
Virginia Michelini Parks  
Frances Mitchell Sherman\*  
**Sybil Moore Pinkham\***  
Ruth Murdick Walker  
Catherine A. Murray\*  
Lorraine Nelson Stevens  
Nancy Notte Smith\*  
Ruth Paetz Braun  
Suzanne Palmer Lee\*  
Nancy Perry Voll\*  
Deborah Potter Waugh\*  
Marjorie Price Johnson\*  
Joan Rabbitt Downey\*  
Shirley Read Lupien  
Sandra Reynolds Grant\*  
Orelyn Rice Emerson  
Margaret Robson Priddy  
Carol Rofer Hofmann\*  
Sara Rojas Casarella  
Shirley Sherwood Adams\*  
Lee Smith\*  
Virginia Smith Grady  
Judith Stone Grabar  
Nancy Swanson Horsfield\*  
Joan Trenholm Morris\*  
Joanna Ward\*  
June Weidner Burns  
Janet A. Welch\*  
Helen Wood Queenan

## 1955

June Anderten Dekar\*  
Thelma Appel Kaplan\*  
Carolyn Caie Hathorne  
Jacqueline Cain Sheils\*  
Janet Carlson Corner  
Carolyn Chapin Snyder  
Jane Clark Minear  
Carol Cunningham Kiley  
Nancy Curtis Kern\*  
JoAnne DiPietro DiMarco\*  
Mary Alice Everett Yurko

Priscilla Fenton Abercrombie\*  
Elaine Gaysunas Coppinger  
Donna Gearhart Leo  
Nancy Goodman Cobin  
Mary Lee Gowdy Belcourt\*  
Jane Gray Milne  
**Patricia Gura Conroy\***  
Carolyn Hall Browning\*  
Barbara Hammett Elkinton  
Genevieve G. Harold  
Ann Harris Hughes\*  
Anne Hartnett Lohnes  
Diana Hendley Cooper\*  
Barbara Hilliard Tracey  
Barbara Judd Ozinga  
Jean Kellner Kyser  
Beverly Kimball Lamburn  
Sandra Lally Hovey\*  
Helen LeFavre Russo\*  
Lucille Marden Randall\*  
June McLaughlin Lombino  
Carol Merwin Robinson\*  
Mildred Monahan Regan  
Valerie Montanez Barto  
Joan Murano Swanson\*  
Lucinda Nolin Johnson\*  
Helen Peters Guy\*  
Cynthia Raymond Paalborg  
Jean Ryder Tyler\*  
Hazel Schoppy Callahan\*  
Maxine Seidel Lyle  
Joan Shanley Verdile  
Susan Shepardson Buchanan\*  
Audrey Silver Rogers\*  
Carol Jean Somers Odrodnik\*  
Joy Stewart Rice\*  
Sandra Stone Myerow\*  
Gail Swanson Rees  
Mary Sweeney Ruggieri\*  
Angela Tabellario Mitchell\*  
Susan Thomas Wiard\*  
Dianne Tuzik Pingree  
Marilyn Valtier Maclay\*  
Jean Van Buskirk Swanfeldt  
Adrienne Vitali Stewart  
Mary Waterman Weaving  
Donna Williams O'Connor

## 1956

Anonymous\*  
Nancy Ahlgren Tewes  
Mary Augur Wallace\*  
**Ann August Marcus\***  
Elaine Bertini Roske  
Deborah Beuttel Gore  
Elaine Card LeFort  
Judy Caswell Allen\*  
Jane Chisholm Glynn  
Joan Conley Eid\*  
Carol Corning Richard\*  
Dorothy Craig Kochli  
Beverly Danks Rieckers\*  
Deanne Dario Sferrino  
Sandra Davis Hudson\*  
Hanna Den Hartog Abrahams  
Agnes di Zerega Cook  
Priscilla Driggs Bevin  
Carol Fitzpatrick Harrell  
Gail Frank Wells\*  
Nancy Freud Harring  
Gail Gelinas Nixon\*  
Ruth Grossman Goldman  
Eugenia Halkiotis Contopoulos  
Shirley Harmon Cobb  
Ann Hastings Peterson\*  
Patricia Hayes Schoeller\*  
Ann Hekemian Krikorian  
Sally Herman DeRosa  
Nancy Hietala Grammas  
**Diane Jacobson Rosenberg\***  
Cynthia Kane Bender  
Therese Kilgore Mannix  
Sara Lester Verbeck  
Elane Lindstrom Williams  
Judith Littlefield Clark\*  
Patti Lockwood Blanchette  
Joyce Maroni Gomes  
Joan McDonald Delmore\*  
Judith Metcalf Daniels  
Barbara Murdock Woods  
Constance Nastasi Mehos  
Frances Nettleton Konsella\*  
Diana Neusner Shapiro  
Patricia O'Shea-Pappas  
Virginia Paolillo Lawlor  
Mary Parmakian Bauer

Ann Pasquale Kibort\*  
Carol Phalen Swiggett  
Joan Polidor Selander\*  
Sally Quicke Reiss\*  
Mary Rader Randall  
Penny Rafkin Blake\*  
Joan Raymond Healey  
Barbara Richman Elliot  
Antoinette Ruinen Stapper\*  
Lorraine E. Saunders\*  
**Margaret Schwingel Kraft\***  
Frances Scott Simmons  
Carolee Scribner Cain  
Nancy Shook Bender  
Nancy Smith Marchese  
Sandra Smith Swain\*  
Cynthia Swett Watson  
Katharine H. Taft\*  
Sally Thompson Carr  
Marylyn Tomancak Kirchhoefer  
Ann Tucker Lojzim  
Bette L. Walsh\*  
Janet Whitney Buck

## 1957

Sonia Altland Griffith\*  
Edith Berger Kaplan  
Ann Bidwell Sanborn\*  
Sandra Bristol Walters  
Eileen Conradi Lynch  
Joyce Conza Swaine  
Jane Coulter Langmaid\*  
**Marion Day Grosjean**  
**Joan Deshefy Patenaude\***  
Ann Donnelly Murphy  
Dorothy Fenley Manning  
Elizabeth C. Fenn  
Suzanne Fournier Solis  
Sue Scott Garratt\*  
Gloria A. Guiduli  
Lenore Hagopian Arabian  
**Marcia James Carthaus\***  
Carol Juechter Dixon  
Caroline Killam Moller\*  
Katherine Knowles Wright  
Patricia Koules Kandianis  
Joan Kramer Edelman  
Virginia Krauss White



## Spotlight: Research Outside the Classroom

“Through the online book catalog, students can access over half a million books, as well as DVDs and CDs,” explains research librarian Jill Shoemaker, who holds frequent classes in the library computer lab to introduce students to the databases and other research tools that are available in Brennan Library.

“There is so much information out there,” she continues, “and the technology for tapping into this wealth of material is constantly being upgraded. I want first-year students to

understand that there is ‘life’ beyond Google and Wikipedia and to be at ease with the online article database. It’s like building blocks and, by senior year, students are doing complex research for their capstone classes. If they choose to go on to graduate school they are prepared.”

Each year the number of students attending the library literacy classes has increased dramatically. “Be careful what you wish for,” says Shoemaker. Funds from the Annual Fund enhance and increase the research materials and updated technologies that are available to the Lasell community.

Chonghyo Lee Shin  
Audrey MacAdam Lowe  
Rosemary Pellegrino Eichenfeld  
Joan Pethybridge Thompson\*  
Barbara Polidor Kubichek\*  
Carol Preater Feldmann  
Barbara Reifenberger Hudelson  
Lori Rounseville Sanford  
Evelyn Sanders Brewster\*  
Sue Stroup Gilbert  
Barbara Sturges Kraus  
Carol Swartz Kumin  
Patricia Tarracciano Ciccone  
Nancy Van Deusen Connor\*  
Jean Warren Tredwell  
Ada Whitmore Suydam\*  
**M. Virginia Zipf Metzler\***

## 1958

Sue Allen Busa  
Betty Anderson Fairchild  
Constance Baker George\*  
Marilyn Barette Roberts  
Barbara Batty Brown  
Bonnie Beckwith Morrison  
Andrea Bischoff Houser\*  
Jeanne Bradner Morgan\*  
Theodora Brahe Lanham  
Linda Braslow Lefkowitz\*  
Cathleen Burns Manning  
Judith Butler Weppel  
Millicent Carlson O'Brien  
Nancy Cincotti Emmons\*  
Sally Clarke Tagliatelo  
Helen Crowder Merullo  
Beverly Danský Singer\*  
Barbara Elm Symington\*  
Laurie Ferrante Cannon\*  
Susanne Fletcher Cahalin\*  
Mary Ann Fuller Young

## Judith George Stephens\*

Patricia Graff Suydam  
Susan Greenhut Kamras  
Marion Heinsohn Mitchell  
Marian Hume Tibbetts  
Gail Loring Jackson  
Sandi Lerner Holzman  
Ellen Mahoney Simmonds  
Janet McPherson Pretto\*  
Gladys Mettler Biasotto  
Roxanne Miller Socolow  
Jeanne Mitchell Leeber  
Portia Pantages  
Joan Plaskon Tatigian\*  
Ann Reeves Burton\*  
Carolyn Reid Towne  
Sarah Requa Guthridge\*  
Gail Seibert Glover\*  
Sandra Sheller Alessi  
Meade Simpson Fasciano\*  
Marsha Singer Marshall  
Nancy Sonshine Kerstein  
Nancy Spargo Goodridge  
Kate Tobin Yelle\*  
Betty Tognazzi Hennessy  
Gail Winalski Burd\*  
Jean Wynott Delahunt

## 1959

Jean Alesio Tsokanis  
Sondra O. Allen\*  
Junis Anderson Nicholson '59  
Rosalind Aulisi Jureller  
**Linda Bailey Bolton\***  
Judith Barnstead Francis  
Beverly Bigelow Young  
Patricia Bowen White  
Cynthia Boynton Green\*  
Susan Bravman Uretsky\*  
Barbara Case Lipke\*

Elinor Castano Duffy  
**Joan Conradi McLaughlin\***  
Betsy Coulson Conrad\*  
Nancy Crowell Coleman  
Carol Cunningham Hoyt  
Joanne Curtis Island\*  
Karen Daniels Dorney  
Lois DeCuollo Johnson  
Marcelle Delaney Nolan  
Ann Douglass Wood\*  
Nancy Ferguson\*  
Nancy Ferguson Chapman  
Joanne E. Ferrera  
Myrna Goldberg Davis  
Joyce Goss Strickler  
Nancy Gotz Cohn  
Martha Grearson Herbert  
Carole Grieve Billafer\*  
Joanne Gullo Gormley  
Louise Harrison Leader  
Maryellen Hess  
Marjorie Hoar Bolland  
Barbara Howell Talbott  
Melisse Jenkins Bailey  
Patricia Jenkins Cooper  
Sandra Kenney Granese  
Barbara Kirshman Goddard\*  
Dorothy Knobel Somogyi  
Linda Larson Behrendt  
Marcia Lietz Sweeney  
Karen Lord Conroy  
Susan McComb Powers  
Catherine McShain White  
Lyndell Mead Betzner  
Marilyn Miller Harris  
Sandra Nider Challant\*  
Sandra Poole Bednarik  
Delores Raymond Chamberlain  
Frances Reid Smith  
Dorothy Risteen Klockner  
Nancy Rotman Duffy\*

Suzanne Saunders Doyle\*  
Judith Sias Fudge  
Carol Slocum Hulse  
Carroll Spelke Dawson  
Diane Strawhince Longley  
Joan Sycle Norwitz\*  
Joan Valentine Glasson\*  
Priscilla Williams Espenhain  
Carolyn Wood Brox

## 1960

Elizabeth Backus Girard  
Audrey Bergesen Long  
Polly Bergstrom Barnes\*  
Barbara Beuth Nelson  
Barbara Bogert Wahlberg\*  
Faith Bowker-Maloney  
Nancy A. Boyd\*  
Charlotte Brown McDowell  
Stephanie Carle Peck  
Linda Chiaramonte Mount\*  
Elaine Chrust Goodman  
Joan Corthouts McCormick  
Julia Davidson Dobson  
Joyce DeAndrus Holzman  
Brenda DiBari Bronson  
Susan Elsbree Warren  
Carol Failla Doughman  
Frances Fleming Kennedy  
Marsha Frommer Crowley\*  
Leslie Ghilani Elkins  
Minna Golden Levin\*  
Judith Grace Lazarus  
Patricia Grodsky Caplan  
Sandra Kaplan Richman  
Karen Kirk Macintosh  
**Jane Kremer Bray\***  
Colleen Light Mette  
Sandra Lund Grouten  
Jean Maroni Torstensen

Barbara McAlary Kashar  
Mary McCartney Kuhrzt  
Carol McKay Stephens  
Antonia Mellen Marshall  
Linda Ostrom Goodwin\*  
Michele Poirier Gorman  
Anita Ramirez Zayas  
Marilyn Senior Legg  
Constance T. Sprague  
Claire Sullivan Gaylord  
Linda Teich Bennett\*  
**Linda Telfer\***  
Jean Terrell Jones  
Carol Vincent Cook  
Judith Williams LaValle  
Lynn Williams Kern\*  
Susann York Stadtfeld\*  
Ronna Zucker Uhrman\*

## 1961

Wilma Baird  
Janice Bateman Burnes  
Georgia Beaumont Tramontano\*  
Carolyn Bird Murray\*  
Judith Broggi Nicolosi  
Andrea Busch Niewenhaus  
Sally Cabral Crowe  
Barbara Carberry Haddad\*  
Barbara Cole French\*  
Suzanne Crafts Davidson  
Barbara Davis Delano  
Susan Dennison Harmon\*  
Patricia Ellis Corey  
Linda Falt York\*  
Joan Franke Neustaedter  
Beverly French Keigwin  
**Lela Graham Moses\***  
Carol Healy McKinnon\*  
Elizabeth C. Hood\*  
Laura Jensen



## Spotlight: Research Across the Curriculum

There is a new academic emphasis this year with a project called Research Across the Curriculum. Classes at all levels of academic study are beginning to incorporate field work and hands-on investigative and analytical work. Support for this comes from a three-year grant from the Davis Educational Foundation and Annual Fund dollars are also invested in backing College curriculum initiatives.

This fall, in Environmental Science Professor Michael Daley's World Geography class, students were asked to study seven different neighborhoods located along the MBTA D Green Line. "They were to collect, compile, organize, chart, and analyze geographic data and draw supporting conclusions," he explains.

"I had never thought about the huge differences between the areas from Lasell to the North End of Boston," says Jordan Clark '12. "As I traveled the T to each neighborhood, I found some of the stereotypes that I expected were true, but I was also in for some surprises. We had access to statistics from the U.S. Census Bureau and I would never have guessed that the North End's population is 98 percent white. I had assumed that it was much more diverse.

"Physically traveling the T to all the neighborhoods made a huge impact on me. I wasn't just reading a textbook. I was seeing and learning first-hand. It was a great way to absorb and process material and made a huge impression."

\* denotes donors with 10+ years of consecutive support of Lasell's Annual Fund  
(d) deceased  
Bold faced indicate Torchbearers or above



Gwen Johnson Redding  
Jane A. Kendrigan  
Carole Kirschner Wilson  
Carole Lamson Burpee  
Eleanor Laney Afflitto  
Concetta R. Luppino  
Marilyn Manzke Loglisci  
Celeste Mayo Shannon  
Barbara Mersky Miller\*  
Phyllis Milano\*  
Elizabeth Miller Gay\*  
Joan Moeller Thompson  
Lynda Niebling Pike  
Linda Norwell Coburn  
Jeanne Orcutt Brady  
Valerie Orcutt Sirignano  
Virginia A. Orsi\*  
Jane Parsons Dolbier\*  
Judith Ready Baird  
Karla Robinson Dunham\*  
**Rona Ruderman Goldstein\***  
Susan Schenker Portnoy\*  
Elizabeth Schwingel Sullivan\*  
Donna Skillings Kessler  
Ellen Smith Burton  
Nan Sparks Hunter  
Barbara Swiatek Vangness  
Susan Sydow Mitchell\*  
Donna Szarek Sullivan\*  
Nancy Thomas Dudek  
Geraldine Weidman Wight  
Wendy Wolfenden  
Virginia Wollinger Fisher\*

## 1962

Ann Abbott Bowler  
F. Lynne Andrews Scielzo\*  
Linda Bald Lathrop\*  
Miriam Bloom Chaiklin  
Marion Blunt Von Heisermann  
Patricia Britva Rosenfield\*  
Patricia Buxton  
Pamela Capuano Veek  
Sharon Carley Fitts\*  
Janet Conte Lewis  
Carol Curtice McKay\*  
M. Kathleen Falvey Garrity  
Virginia Fletcher Yagovane  
Patricia Gath Moessinger\*  
Beryl Hamlen Morrissey\*  
Ingrid Jonason Burch  
Priscilla Lane Jarman  
Janet Lopaus Starkes  
Carol Miller Glassman  
Judith Moss Feingold  
Jasmin Mueller Gentling  
Doris Orben Campbell\*  
Tracy Potter Vangermeersch  
Nancy Quattrocchi Soule  
Bonnie A. Reimann\*  
Sally Remley Southmayd  
Carol Rzeznikiewicz Russell  
Joan Sastavickas Curtin\*  
Karen Smith Grover\*  
Nancy Sporborg Green\*  
Elaine Sproul Belham  
Linda Strecker Thorn  
Carol Swanson Evans\*

## 1963

Dorothy Andler Silber\*  
Kathleen Baker Taylor  
Suzanne B. Banghart  
Joan Barry Lane  
Deborah Begg McKinney  
Cornelia Bessemer Hatfield  
Jean Caldwell Morceau  
Jeanne Chase Peckham\*  
Barbara Christiansen Haimann  
Bette Cole Greene  
Gail Crosby Trafton  
Judith Firth Haggett  
Lynne Giffen Keener\*  
Margo Hicks Waite  
Sarah Hirst-Pitts\*  
JoAnn Jacobson\*  
Arlene A. Jacopian\*  
Linda E. Kaiser  
Ellen Kaplan Gittleman  
Marian Sue Kerstein Sherman\*  
Claire Lipton Zimmers\*  
N. Drew Lucas Atherton  
Susan March Allen\*  
Sharon Merrill Currier  
Hedwig Mozden Wands  
Linda Norris Taylor  
Mildred Panetti Gibson  
Marjory Prezioso Delaney\*  
**Patricia Ryan Cantin**  
Daryl Anne Schmid Anderson  
Joan Seibert Agnagian\*  
Nancy Spelman Moyer  
Sandra Stahl Thomas  
Anne Thiessen Sullivan  
Irene Tuttle Morine  
Amy S. Ullman\*  
Linda Welt Horowitz\*  
Judith Young Knight

## 1964

Susan Alford Ross  
**Vivien Ash Gallagher\***  
Marion Bishop Kersh  
Jane Boyden Kropp\*  
Carol Bradley Sullivan  
Penny Brewster Martyn  
**Lynn Brown Kargman**  
Elizabeth Burdick Cantarine  
Susan Childs Merrick\*  
Susan Coster Malsin\*  
Elizabeth Daigneau Marshall\*  
Ruth DeWitt Ghia  
Lee Dunstane Vandermark\*  
Amey Eckles Dodge\*  
Kathleen Etz Venier\*  
Terry Fleming Cox\*  
Margery Flowers Baston\*  
Susan Gilland Smith  
Felice Goldman Resko\*  
Susan Gorfinkle  
Marsha Graziano Ballantyne  
Jane Hanff Twyon  
Kathleen Hayes Panos  
Susan Humphreys Klein  
Beth Jaffe Pressman  
Susan Kaplan Floman  
Marsha Keyes Tucker\*  
Linda Kistler Desrosiers  
Paula Lally O'Brien  
Beverly Landros Bley\*

Karen LaRochelle Baker  
Terry Lefort Hansberry  
Betsy Levine Printz  
Marcia Mactavish Syer  
Susan Marx Thompson  
Jane McKee Rozes  
Susan Mills Armstrong  
Claire Monahan Knox  
Joanne Oliver Page\*  
Sara Jane Osborne\*  
Antoinette Palmer Overacker  
Linda Parmenter Goulding  
Patricia Perry Polidor\*  
Linda Pillarella West\*  
Carole Pulaski Clark  
Janet Ramsbotham Blake\*  
Kathleen Rebmman Royka  
Elinor Rosen Rouff\*  
Lynn Rosenbush Davidov\*  
Linda Salvati Ladd  
Ruth Sawyer Staley  
Virginia Schmidt Pantton  
Andrea Siegel Cohen  
Jan Slocum  
Helene Smith Shippen  
Ann Stern Russo\*  
Judith Stone Matthews  
Robin Strauss Shapiro  
Patricia Washburn Mancivalano\*  
Linda Werner Simon\*  
Donna Whiteley Sieverts  
Bette Young Avery

## 1965

**Elisse Allinson Share\***  
Nancy Almgren Killam  
Carole Bourdon Suddaby  
Sheryl Chapman Kammer  
Sandra Clark Boynton  
Sandra Cramblet Cox  
Anne DeArment Kleffel\*  
Meredith Gowdy Meislahn\*  
Julia Gurka Kubaska  
Mary Harrison Lansing  
Katherine Healey Marella  
Diane Hildebrand Cadagan  
Jean Hill Johnson\*  
Gail Jacobsen Isaksen  
Susanne Johnson Nicolazzo\*  
Eleanor Lamson Brewster  
Ann Mattioli  
Andrea Mattisen-Haskins  
Lydia Moissides Hines  
Janet Muir Garrity\*  
Marilynn Paganelli Ugalde  
Karen Pedersen Silverthorn\*  
Virginia Pedrick Searle\*  
Pamela Porter Barefoot  
Karin Rohleder Kline\*  
Emilie Rowe Zucker  
Sibyl Ryan Piccone  
Dorothy Searles Woods  
Marjorie Story Brown  
Ellen Sweeney Fox  
Joan Vaidulas Winterson  
Lynn Wemple Biggers\*  
Linda Wilson Olson  
Elizabeth Wright Frappier  
Diane Yacovone Aurigemma\*  
Margo Yonker MacKenzie  
Janet Young LaCava

## 1966

Anonymous  
Nancy B. Black\*  
Bonnie J. Broe  
Susan Campbell Lamonica  
**Barbara Caron MacClean\***  
Colette Cavanaugh Clark  
Derith Cinq-Mars Fellows  
Katherine Conners Novak\*  
Carolyn Crayton McVoy\*  
Carolyn Davis Fish\*  
Joan Erkkila Fayne  
Elizabeth FitzGerald Donovan  
Nancy L. Goodale\*  
Sharon K. LeVan\*  
Marsha Howe Neubert\*  
Eleanor Mackinnon Speh  
Deborah Markey Sayles  
Kathleen Moshure Johnson  
Nancy Palmer Brandston\*  
Paula Quattrocchi Tingley\*  
Elizabeth Reitman Lowenstein  
Susan Ritchie Clark\*  
Lois Sawyer Caulfield\*  
Donna Terwilliger Moor\*  
Barbara Ann Weidlich Lee  
Marion Wheeler Kimball\*  
Carolyn White Amdurer  
Martha Wright Potter

## 1967

Susan Baxter Brown  
Nancy J. Begg  
Martha Begley Hertel\*  
Diane Benson Goldstein  
Marsha Breiner Liskov  
Margaret Brooks Pilachowski  
Sandra Chavez Hudson\*  
Christine Chirgotis Theuerkauf\*  
Marcia Clarke Young  
Gail Edwards Pocock  
Sandra Erkis Summer  
Wendy Foster Cote\*  
Donna Garrow Johnson\*  
Cheryl Glockner Lappen  
Heather Hines Peterson  
Ann Hudson North\*  
Jean Hurlburt Wentzell  
Kathryn Jones van Renesse  
**Bonnie Kamerdiner Marsano**  
Denise Koules Katsaros\*  
Patricia Lee Rackliffe  
**Susan F. Lillywhite\***  
Patricia Mahony Hanson  
Katherine McDonough Ryan\*  
Kathryn Morgan Lucey\*  
Judith Noveck Lamoin\*  
Caroline C. Payson  
Susan P. Posner\*  
Judith Preston Waters  
Margaret Rebmman LeMasurier\*  
Martha Rorty Boiardi  
Carol A. Shapiro  
Miriam Shurkin Heyman  
Susan L. Swanson\*  
**Victoria Tenney Grabows**  
Ellen Wagner Call

## 1968

Barbara Billington Young  
Donna Brown Safran  
Elizabeth Brown Koss  
Christine Copeland Johnson\*  
Nancy Deveno Pagano  
Karen Duchesneau Blanck  
K. Bonnie Edwards Kregling  
Priscilla Fales\*  
Sherry Federman Stein  
Heather Heath Reed  
Heather Hines Peterson\*  
**Jackie Hoffmeier Lee**  
Carol Johnson Hodgdon  
Christine Kinney McCann  
Judith Lipkins Ness\*  
Ellen Margolis Monk  
Nancy J. Morrison  
Meredith Morton Hill  
Kathleen Nelson McGee  
Elizabeth M. Pace  
Barbara R. Palmer  
Stephanie Pendleton  
Susan Pegues Owen  
Donna C. Quattrocchi\*  
Cynthia Rardin Crawford  
Mary Lou Rossano-Collier  
Cheryl Silvers Park  
Melissa Smith Hubbard\*  
Ann Sterner Tyler  
Laura Struckhoff Cline  
Sherry Swain Dey\*  
Janice Taylor Perruzzi\*  
Victoria Tennant Bettes  
Patricia Torbror Geoghegan  
Dale Tufts Yale  
Candace Watson Burnham\*  
Elizabeth Wissman Walendziewicz  
Ruthanne Woods Thibodeau  
Joan Zaidman Turkell

**1969**

Anonymous  
S. Ronna Blumenthal  
**Laurel Boyle Rose**  
Melinda Brown Kindsvogel  
Eileen Cleveland Sterio  
Mary Anne Conboy  
Kathleen H. Conway\*  
Kathleen Cooper McElroy  
Nancy Cromer-Grayson  
Jane Davis Franchot  
Jacqueline Dubin Foster  
Kristine A. Gardner  
Christine Geremia Gingras  
Laura Glass  
Jane Gordan Cobban\*  
Shelley Gray Krug  
Deirdre Greene Malone  
Louise Hilden Lord  
Susan Hulton Curtis  
Susan Judd Griswold  
Linda L. Koed\*  
Linda Luskin Towne  
Barbara McTiernan Isabella\*  
MaryAnn Mitchell Beaver\*  
Cynthia Rinklin Feigin  
Margaret Salzer LoCastro\*  
Linda M. Satterfield\*  
Susan Schnelwar  
Janet Sheffer Kerney

\* denotes donors with 10+ years of consecutive support of Lasell's Annual Fund  
(d) deceased

Bold faced indicate people who are Torchbearers or above

Leah Smith Schneier  
Linda Soux Heller  
Susan Thompson Johnson\*  
Kathryn Turner Soucy  
Laurie Umanoff Goldstein  
Janet Walker Cann  
Gloria Wizbicki Leighton  
Wendy Woolfort Cutler  
Susan Young Charton

## 1970

Muriel Belkin Rowell  
Carol Boisen Hawley  
Linda Casciello Coveney  
Constance Farley Whittall  
Paula Finnegan Dickinson\*  
Monica Fuchs Kramer  
Linda Gagne Glasser  
Nora Jean Ganslen\*  
Monica Haseltine Baker  
Charlene Holt Mango  
Deborah Khmerling Schneider\*  
Kathleen Loeb-Schwab  
Eileen McGuckian  
Pamela Parker Gartin\*  
Catherine Phippard Doyle  
Cynthia Plimpton Corbin  
Maryann Rizzo Hart  
Caryn Rae Robin  
Elizabeth Shurtleff Winter\*  
Nancy Suffness Rabuse\*  
Sally Swope  
Alexandra Taylor Hills  
Marianne Thomen Williams  
Alexena Thun Frazee\*  
Margaret Whipple Christie  
Janice Williams Xeller  
Victoria Wright Tuller  
Susan Younger Niederman\*

## 1971

Anonymous  
Mary Anne Bailey Hansen  
Margaret Catalano Quigley\*  
Susan Delis DeBlasis  
Veda Fitzgibbons Connolly  
Christine Flach Ristaino  
Joyce Freedman Kreppel  
Martha T. Herlihy  
**Mary Hobler Hyson\***  
**Kathryn Johnston Berardi**  
Deborah Kopf Hayes  
Nancy Kuehl Mayo  
Kathryn Lockwood Benson  
Lori MacDonald Mazzarelli  
**Karen Manchon Frank**  
Carol A. Miller\*  
Johanna Nahatis Kadra\*  
Cheryl Pandolf Schenk\*  
Ilene V. Prashker  
Faye Rosenthal Goldman  
Anita Svolis Herrick  
Mary Wilson Boegel

## 1972

Elizabeth Andrews Haidet\*  
Katherine Begg Kiernan  
Bonnie Berman Wugman  
Susan Bohner LaVista

Donna Burckes Cronin  
Susan Carten Varga  
Shelley Carton  
Judith Cooper Hock  
Christine Crotty Rizzitano  
Paula Dincecco Morthanos  
Jennifer Drake Thomas  
Barbara Enos Clancy  
Patricia Estabrook Filosi  
Marsha Fall Stuart  
Helen Follansbee Nicita  
Nancy Germain Smith  
Deborah Glynn Jones  
Janet Hakanson Jepson  
Nancy Inman Becker  
Susan Israel Wollkind  
Jeanne A. Johnsen\*  
Julie Jordan Sneider  
Amy Juskowitz Sponseller  
Wendy Kitchen Spruiell  
Nancy E. Kopel\*  
Barbara H. Mayer  
Deborah Korman Roberts\*  
Lisa Rosner Sussman  
Pamela Ross Dunham\*  
Stephanie Rotchford Arsenalut  
Margaret Ryan Adams  
Cynthia Scalzi Brown  
Sally Schlesinger Seed  
Susan L. Schrade  
Nancy Shinnick Kinton  
Sally Thompson D'Allesantro\*  
Elaine Vogel Cartland  
Elaine Waldman Rosenthal  
Deborah Wells Nunes\*  
Joanne White Bartlett  
Nancy Zuber Perry\*

## 1973

Elizabeth Acker Huthwaite  
Lynn E. Cormay  
Francine Doria Stanley  
Christine Dormail Corriveau  
Susan Feinberg Casper\*  
M. Annette Greim Thompson  
Sara Henley Cline  
Marjorie Hirschaut DiGalbo  
Maureen A. Hitchins  
Maureen Kent Goheen  
Suellen Kutenplon  
Janet Lockwood Kawada  
Julia McDonald Boliver  
Janet Nickerson Ogilvy  
Christine M. Urbano\*  
Margaret Walsh Pereira  
Elizabeth A. Watkins

## 1974

Cheryl Aglio-Girelli  
Margaret Allen Howe  
Lillian B. Araujo\*  
Bonnie Baker Arnold  
Dorothy Blatchford Jenkins\*  
Laurie E. Chavenson  
Christine M. Chura  
Lauren Cottone Beckman\*  
Karen Crutchley Ronan\*  
Susan Curry Soucy\*  
Debra DeFanti Surprise  
Michelle Deubel Roderick

Lynn Durkee Sciortino\*  
Lorraine Fanotto Zaretsky  
Marian Fletcher Buckley\*  
Gerry Gaffen Alterbaum  
Nancy B. Gill\*  
Adria Goldman Gross  
Nancy Granger  
Janice Hadfield Ahlers  
Susan Hastings Mailloux  
Dale Haworth-Wilson  
Deborah Hewitt-Skowera  
Barbara Hirschfield Henry\*  
Lucy Lindeman Carty\*  
Virginia Pace Hodgkin\*  
Angela Paolantonio Lowy  
Patricia Raposa Reineke  
Jeanne Saidnawey Logtens  
Kerry Sullivan Lambert

## 1975

Sandra Aitcheson Gingras  
Lesly Bogoff Reiter  
Rosanna Cafarella Greco\*  
Wendy L. Clarke  
Laurie Craven Halpin  
Mary Anne DeSantie Abercrombie  
Robin Dubis Zibrat  
Barbara Greenberg Brumberger\*  
Gail Hellewell Harrington  
Elaine B. Hodson  
Elizabeth Levin MacVarish  
H. Alice Mason  
Marianne Moran Conkey  
Victoria P. Pearmain  
Laurie Pincus Ziomek\*  
Jane E. Raymond  
Karen Richards Toothaker  
Susan Wolf Geremia

## 1976

Holly Gilfillan Ready  
Jennifer Hughes Bardsley  
Joanne Lord-DiBella  
Marilyn A. Murray  
Karen Quagliozzi Quinn\*  
Susan T. Searfoss  
Sarah Jane Spadaro Pratt  
Margaret Tayler Careau  
Judy A. Velletri

## 1977

Marian Abbate MacDonnell  
Lynn Alyanikian Lowrey\*  
Margaret Benoit Sapia  
Greta F. Curtis  
Sandra Goldberg Katz  
Janet Guertin Daigle\*  
Rosemary Howard Daggett\*  
Lorrie Marti Schell\*  
Robin Martin Powers  
Muriel Monroy Conway  
Lynne Pantaleo-Congdon  
Jody Pardus O'Connor\*  
Cynthia S. Pinkham\*

## 1978

Susan J. Aldrich\*  
**Tamara Bettcher Walker**

Vicki Caskie Boucher  
Paula Colantuono Bross  
Janet DiSangro Donovan  
Hilary Hayes Geyer  
Kristina A. Leclaire  
Maureen P. McDonald  
Eleanor V. Pannesi  
Patricia A. Ray\*  
Susan Sarris Redente  
Christina Striker Parker\*  
Mary Ann Templeton Murray

## 1979

Donna Appleyard Gould  
Rebecca Barth Gallucci  
Judith M. Caner  
Ronnie Cohen Romanuck  
Lorraine Davies Ellerson  
Betsy DeRosa Wolfe  
Karen Duffy Brigham  
Suzanne C. Fortin\*  
Pamela Henderson Pagliaro  
Judith Kuchachik Fletcher  
Elizabeth Landry St. Germain  
Patricia Marrocco Haller  
Monica McCormick McDougall  
Marie Pengue Sheets  
Marina Rowe Seitsinger  
Mary Serio Lownds  
Christine A. Tribou  
Sarah Vitka Yore

## 1980

Helen Biziak Driscoll  
Amy Donovan Lemon\*  
Holly Dudek Alhart  
Janice Galusza Palatine  
Jean Punch Conkey  
Emily Renz Barron\*  
Cheri Saglio Holden  
Lisa Simmons  
Allyson Spencer Cotton

## 1981

Mandi Bulette Coakley\*  
Kathryn Cotter Brown  
Sandra Cotton Coburn\*  
Carolyn Munro Kalahar  
Maureen A. O'Brien  
Lisa Otzel Turner

## 1982

Carol Abenante Hurteau\*  
Lisa Alden Haley\*  
Eileen Kelley Murphy  
Susan McKay McConville  
Robin Tavekelian Post  
Cathy L. Tilley

## 1983

Shelley Avila Olm  
Judi Carlson Van Riper\*  
Judith Corey Perrin  
Susan Guerin Roach  
Barbara Harvie Sigler  
Linda Humphrey-Walsh  
Roslyn Ingall Katz

Gina Lanza Coates  
Therese Reynolds  
**Katharine Urner-Jones\***

## 1984

Barbara Baron Grant  
Tracey Connor Young  
Alicia Ingalls Hoft  
Barbara J. Jarvis  
Elinor Lahive Carrera  
Darlene Leason Cote  
Paula Mastin Faria  
Julie Roberts Scharf  
Lorraine Roy Wyman  
Natalie S. Sciacca  
Elizabeth A. Waldo

## 1985

Wendy Bosse Alexopoulos  
Dawne Burnham Mortenson  
Honor Jutila Davis  
Denise Lines Sullivan  
Pamela Manikas Washek  
Clair McCarthy Dalton  
Kristyine McNary Hayden  
Danielle J. Sacco  
Arlene R. Strauss  
Janet Tambascio Weaver Holleran

## 1986

Janet Cannon  
Kirsten Clark Murphy\*  
Susan Wood Karpenko

## 1987

Catherine Bernhard Dagnault  
Elizabeth Brewster Murray  
Patricia Celli Tomczyk\*  
Wendy Ford Foley  
Majorie S. Kahn\*  
Christina M. Lopes  
Kristine E. Lotoski  
Ann J. Mignosa\*  
Wendy C. Tarfano\*

## 1988

Dawn Chiofilo Adrian  
Erin Fitzmaurice Minichiello  
Dana Sprouse McLaughlin  
Leslie Studenic Smrtic

## 1989

Catherine L. Childs  
Steffanie Kaplowitz Finn  
Yuko Tsumori Mizuno  
Lynda Wolfson Walsh

## 1990

Debra Ayube Glass

## 1992

Tracy T. Grant  
Laura Heavey Gavel  
Stormy Horton Bell

\* denotes donors with 10+ years of consecutive support of Lasell's Annual Fund  
(d) deceased  
Bold faced indicate Torchbearers or above

## 1993

Elizabeth Bottinick Margolin  
Heather Dudley-Tatman\*  
Kathryn Madore  
Wendy C. Tarfano\*

## 1994

**Katherine E. Meredith**

## 1995

Dawn Chiofilo Adrian  
Jeanne E. Nisbet  
Heather Prescott Palleiko

## 1996

Heidi Watkins Helwig

## 1997

Patricia Beck Bishop\*  
Barbara M. McDermott

## 1998

Jessica Anthony  
**Urit Chaimovitz**

## 1999

Nancy Brancato Murphy  
Jennifer Brooks  
Allison Clifford Hillman  
Gina Harrison  
Nicole Houdelette Ragognetti  
Catherine M. Melusen  
Lisa A. Zinman

## 2002

Shannon Muscatello Saraidarian

## 2004

Eileen Apelian  
Courtney E. Connell  
Amy Pilat Weksner MSM '08  
Jennifer Pope MSM '08  
Mary Pat Smyth  
Amy Sprague Sundberg

## 2005

Chantel D. Daley MSM '07  
Shanna DeCapitani  
Kyle F. Ganley  
Michael J. Mackiewicz  
Andrea Pontillo

## 2006

Lindsey B. Fagin  
Alaina M. Galvin  
Jo-Edith Heffron MCert  
Andrew T. Pacilli  
Myrna Ann Saltman MCert  
Robin Sherman MSM\*

## 2007

Richard J. Bruno  
Brian J. Doherty  
Grigori Ialynytchev MSM  
David Kelley  
Casey Rich  
Mary K. Wollstadt

## 2008

Akeya Bennett MSM '09  
Leah Castellano  
Juliana F. Cordeiro MSM  
Melissa O. Fuller  
Camille J. Gillman  
Ivy A. Kemp  
Joshua P. Montinieri  
Kathryn E. Mosher  
Jessica L. Oliveira  
Heather Prescott Palleiko  
Michelle Purington MSM '09  
Ricardo Sanon

## 2009

Ashley M. Abentroth  
Kendall A. Barreiro  
Brad Caravoulis  
Stacey L. Gulyas  
Katelyn M. Hammond  
Maggie Mathews  
Amanda L. Miller  
Kali A. Smith

## 2010

Scott Bacon  
Andrew Civetti  
Renee Clarke  
Megan Courtney  
Julianne Deganis  
Alyssa Fetera  
Jessie Handley  
Julie Hayes  
Le Hong Hopkins  
Zachary Lambert  
Meghan Lutz  
Maura Merullo  
Erica Newton  
Samantha Plack  
Nicole Slader  
Katherine Stokowski

## 2011

Bernard Auch  
Courtney Brothers  
Christina Coll  
Andrew Mayer  
Jennifer Stitt

## 2012

Amy Alessi  
Shahin Allahverdi  
Shaun Andre  
Michael Bagge  
Sara Bamber  
Alyssa Beaton  
Patrick Bresnahan  
Kari Buttkus

Krista Chasan  
Erica Choutka  
Danielle Cleveland  
Amanda Comeau  
Erin Copeland  
Michael Costello  
Robert D'Agostino  
Alexandra Daniel  
Jamie DeLaurier  
Amanda Dionizio  
Ashley Doak  
Caitlin Dorgan  
Danielle Drapeau  
Adam Ebert  
Michael Fannon  
Connor Faulkner  
Kathleen Flanagan  
Jordan Flom  
Jordynn Frolo  
Jenna-Lynn Geary  
Jonathan Glenn  
Stephanie Greenblatt  
Amanda Guarino  
Catherine Hart  
Marissa Hathaway  
Joshua Henderson  
Erin Hennessey  
Elizabeth Higgins  
Kara Hinthorne  
James Hooper-Hamersley  
John Huynh  
Jared Iosua  
Sally Jean-Baptiste  
Melanie Laprade  
Christina Laughlin  
Loni Lee  
Carlton Lentini  
Brittany Leone  
Corrie Letourneau  
James Little  
Christina Lombardi  
Kasey Looney  
Joseph Lyons  
Samantha Maxwell  
Andrew McCabe  
Lauren McFadden  
Marissa McHugh  
Joseph McKernan  
John McLahon  
Andrea Melo  
Cherai Mills  
Meghan Missett  
Heather Mlodzianowski  
Jennifer Moniz  
Randi Mosley  
Dana Parrinello  
Jacob Pearsall  
Ellen Perl  
Alison Ptts  
Bryana Prout  
Colleen Ralston  
John Redding  
Ryan Saporetti  
Lauren Short  
Kara Shuhart  
Elizabeth Stickley  
Virginia Sullivan  
Courtney Taylor  
Jessica Taylor  
Grant Vantine  
Krystina Vieira  
Brian Vincenzi

Mitchell Wagenbach  
Amanda Whalen  
Chelsea Whitehouse  
Ainsley Wolfe  
Caitlyn Woodbine  
Nicole Wzorek

## Friends

### Anonymous

Anonymous  
Barbara P. Aalto  
Joseph Aieta, III\*  
Kenneth D. Akins  
Casey Alexander

### Michael B. Alexander and Mary Barbara Alexander

Emily Alter  
**Sally M. Andrews\***  
**Margaretta Arnold H'07\***  
**Robert H. Arnow**

Pamela Arons  
Mark Aronson  
Diane M. Austin\*  
Janice M. Barrett  
Evelyn Berman  
Keith D. Bilezerian  
Lynn Blake

### Richard K. Blankstein

Steven Bloom  
Linda S. Bruenjes  
Roger Campbell  
Jill Carey

### David A. Carlson

Sally Carola  
Robert G. Carpenter

### Rena Clark

Stanley W. Clark  
William L. Copithorne  
Jeffrey P. Corcoran  
Dr. & Mrs. Manning J. Correia  
William H. Cruickshank  
Michael J. Daley

Samir Desai  
and Nilima Desai

Marilyn Dewar

### Thomas E.J. de Witt H'07\* and Margaret E. Ward H'07\*

John K. Dirlam, Jr.  
Richard D. Dodds, Jr.  
and Jane Smalley

Laureen Doescher  
Sally A. Drachman

### Elisabeth M. Drake

Shirley Edelson  
Pamela Faria  
Sabrina Ferris  
Champe A. Fisher\*  
Solomon J. Fleishman  
Haegan Forrest  
and Kristen Forrest

Adrienne Franciosi  
Dr. & Mrs. Fred H. Frankel  
Mr. & Mrs. William Franklin  
Richard T. Frederics  
Gretchen G. Friend  
Rosalie Frolick  
Donald R. Fulton

### RoseMary B. Fuss\*

**Daniel R. Gant**  
Michelle Gaseau  
Robert Gecht

Corinne A. Geist  
James W. Gentles  
Karen B. Gill\*  
Ana Glavin  
**Priscilla A. Glidden\***  
Sylvia Goodman  
John M. Grimson, Sr.  
Mr. & Mrs. Irwin Gruverman  
Celeste L. Harrington  
David Harris  
**Helena Bentz Hartnett\***  
Grace Hasenbush  
**Susan Hass**  
**Kathleen D. Hegenbart\***  
**Richard S. Holway H'01\***  
and Jeannine Holway\*

### George Hornig

H. Natalie Horwitz

### Michael Hoyle

Cynthia B. Hunt

### Robert H. Huntington\* and Susan McCafferty\*

Sally Ishihara  
Margaret C. Ives

### Lawrence Jones

Susan S. Kaplan\*

Richard Karcher

Sylvia Kaufman

Mildred and Aaron Keller (d)

### Rebecca Kennedy and James Kennedy

Catherine V. Kidd

### William Klingbeil\*

Thomas Koerber

### Rudolph Kraft\*

Eleanore and Harvey Kram (d)

### Mr. & Mrs. David Langstaff

### Lemuel Lanier

### Chester K. Lasell

Marian E. LeFevre

John F. Leonard

Tessa LeRoux

Sharyn Lowenstein

### Michael A. Maggiacomo

Camille Malamud

Jeannie Mammola

Mr. & Mrs. Paul Mann

Diane Maria

### Marisa L. Mascaro

### Dwight B. Massey\*

Amy J. Maynard

Joanna McCarthy

Joan McGrath

### Arthur Menard

Marsha Mirkin

Joan C. Morris

### Horace C. Moses, III\*

Jan-Marie Murray

Roslyn Nadler

### Sharon A. Neble

### and George R. Neble

Alla O'Brien

Kathleen M. O'Connor\*

### Ellen S. Offner

### James Ostrow

### and Christine Ostrow

### Paula DeAngelis Panchuck\*

### Francis J. Perry, III

### and Susan Perry

### John V. Pilitsis

Malini Pillai

Dianne Polizzi

\* denotes donors with 10+ years of consecutive support of Lasell's Annual Fund  
(d) deceased

Bold faced indicate people who are Torchbearers or above



Joseph L. Potts  
 Michelle L. Powers  
**George Putnam\***  
 Iver S. Ravin  
**Alan H. Robbins**  
**and Jerje Ann Robbins**  
 Clesson A. Robbins  
 Kathleen Rudnicki  
 Helena L. Santos  
 Stephen N. Sarikas  
 and Marlena Yannetti  
 Mark Sciegaj  
 Ann Sherman  
**Ruth S. Shuman\***  
 Mr. & Mrs. William Silen  
 Lee P. Smith\*  
**Erik J. Stapper**  
 Phyllis D. Taylor  
 Eric M. Turner  
 James M. Tweed  
 and Pamela Tweed  
 Martha M. Urban  
 Anne Valley  
 Dianne M. Veitch  
 Michelle Walmsley Vigneux  
 Nancy R. Waldron  
 Martin Walsh  
 Christine Walter  
 Brian J. Wardyga  
 and Laurie-Lee Wardyga  
**Kathryn E. West**  
 Russell A. Winslow  
**Judith B. Wittenberg**  
**and Jack Wittenberg**  
**John Woodward**  
**Kyo Yamawaki**  
 Mascha Zyskind

## Parents

**Anonymous**  
 Mr. & Mrs. Richard Aberman  
 Mrs. Doreen Allen  
 Mr. & Mrs. Jeffrey Allen  
 Ms. Susan Amon  
**Mr. John E. Amorello**  
 Mr. & Mrs. Germano Andre  
 Mr. & Mrs. Manuel J. Antunes  
 Mr. & Mrs. John Arruda  
 Mr. & Mrs. Reginald Babcock  
 Ms. Christina Baldwin  
 Mrs. Karen Ballou  
 Mr. & Mrs. George Barksdale  
 Mr. & Mrs. Joseph Barreiro  
 Mr. & Mrs. Donald Belanger  
 Mrs. Patricia Bell  
 Mr. & Mrs. Wayne Berliner  
 Mr. & Mrs. Christopher Bishop  
 Mr. & Mrs. Fred J. Bonk  
 Ms. Margareda Bou-Nassif  
 Mr. & Mrs. Michael Boucher  
 Mr. & Mrs. Paul Brace  
 Ms. Ronna Brady  
 Mr. & Mrs. James W. Bricker  
 Mr. & Mrs. Robert Briggs  
 Mr. & Mrs. Claudio Brocado  
 Mrs. Paula Bross  
 Mr. & Mrs. Kevin Brothers  
 Ms. Marie E. Bruninghaus  
 Mrs. Mary Bulhoes  
 Mr. & Mrs. Joseph Buono  
 Mr. & Mrs. Jeffrey Burkholz  
 Ms. Jane F. Cahill  
 Mr. & Mrs. Francis A. Callahan

Mr. John F. Callahan  
 Mr. & Mrs. Stephen J. Cameron  
 Mr. & Mrs. John Campbell  
 Mr. & Mrs. Thomas Caraccio  
 Mr. & Mrs. Robin Carbone  
 Mr. & Mrs. Jeffrey T. Caron  
 Mr. John David Carroll  
 Mr. & Mrs. Richard Cartland  
 Mr. & Mrs. Robert Casavant  
 Mr. & Mrs. John Chetta  
 Mr. & Mrs. Junior Christmas  
 Mrs. Cynthia F. Clark  
 Mr. & Mrs. Brian Cleary  
 Mr. & Mrs. David Coderre  
 Ms. Laura Coiro  
 Mr. & Mrs. Daniel Cole  
 Dr. Sergio Collado  
 Mr. & Mrs. Peter Conti  
 Mr. & Mrs. Patrick Conway  
 Mr. & Mrs. Gary Cook  
 Mr. & Mrs. Lincoln A. Cooper  
 Ms. Lynn E. Cormay  
 Mr. & Mrs. Phillip Cotnoir  
 Mr. & Mrs. Thomas L. Coughlin  
 Mr. & Mrs. Alan Craft  
 Mr. & Mrs. Francis Csekovsky  
 Ms. Victoria Curione  
 Mr. Dennis Curran  
 Mr. & Mrs. James A. D'Agostino  
 Mr. & Mrs. Gregory J. Davis  
 Mr. & Mrs. Sergio Deganis  
 Mr. & Mrs. James DeMieri  
 Mr. & Mrs. John Desalliers  
 Mr. & Mrs. Ralph Dicostanzo  
 Mr. & Mrs. Leonard L. DiPietro  
 Mr. & Mrs. Frank DiRienzo  
 Mr. & Mrs. Phillip DiTommaso  
 Ms. Traci A. Doak  
 Mr. & Mrs. Richard C. Dolliver  
 Mr. & Mrs. Michael J. Donovan  
 Mr. & Mrs. James Dougherty  
 Mr. & Mrs. Guy A. Drapeau  
 Ms. Sheila Duranleau  
 Mr. & Mrs. William Eberding  
 Mr. & Mrs. John Ebert  
 Mr. & Mrs. Gary Ehlers  
 Mr. & Mrs. Michael E. Fannon, Sr.  
 Mr. & Mrs. Richard A. Farnell  
 Mr. & Mrs. John Faro  
 Mr. William Farr  
 Mr. & Mrs. Steven Fernandez  
 Mrs. Linda Fetera-Watras  
 Mr. & Mrs. Robert Fields  
 Mrs. Catherine Fitzpatrick  
 Mr. & Mrs. Robert Focht  
 Mr. & Mrs. David Foss  
 Ms. Donna M. Foster  
 Mr. David Franciosi  
 Mr. & Mrs. Gregory Gagne  
 Ms. Madeline C. Gay  
 Mr. & Mrs. Michael Gentile  
 Mr. James Gilfillan  
 Mr. & Mrs. Douglas B. Gilson  
 Mr. & Mrs. Mark Goldstein  
 Mr. John Greene  
 Mr. & Mrs. Thomas R. Gundlach, Sr.  
 Mrs. Susan Gustafson-Byrne  
 Mr. & Mrs. Thomas Guzman  
 Mr. & Mrs. George F. Haase, Jr.  
 Mr. & Mrs. Wendell G. Haire  
 Mr. & Mrs. Arnold R. Haley, Jr.  
 Mr. & Mrs. Mark Hammond

Mr. Robert Harrington  
 Mr. & Mrs. Thomas M. Hart  
 Mr. & Mrs. Mark A. Haversat  
 Mr. & Mrs. Constantine Haydock  
 Ms. Sandra Hayes  
 Mr. & Mrs. Philip Horowitz  
 Mr. William Hueston  
 and Ms. Kathleen Martin  
 Mr. & Mrs. David Huhtala  
 Mr. & Mrs. Jon Hulse  
 Mr. & Mrs. John Iles  
 Mr. & Mrs. Stephen M. Isherwood  
 Mr. & Mrs. Matthew Jackson  
 Mr. & Mrs. Kurt Jindela  
 Mr. & Mrs. Kenneth Jorgenson  
 Mr. & Mrs. Robin Joseph  
 Mr. & Mrs. John Kana  
 Mr. & Mrs. Michael J. Keefe  
 Mr. & Mrs. Kirk Kennedy  
 Mr. & Mrs. Andrew Klein  
 Mr. & Mrs. Henry Krasodowski  
 Mr. Ricky A. Kusturin  
 Mr. & Mrs. Tony Lafuente  
 Mr. & Mrs. Khuong Lam  
 Mr. Nelson C. Lambert  
 Mr. & Mrs. Thomas Lambert  
 Mr. & Mrs. Kevin Leahy  
 Mr. & Mrs. Robert Leist  
 Mr. & Mrs. Donald J. Lenihan, Jr.  
 Mr. & Mrs. Daniel P. Lenox  
 Mr. & Mrs. Carlton P. Lentini  
 Mr. & Mrs. Robert Liberatore  
 Mr. & Mrs. Theodore Linstrom  
 Mr. & Mrs. Henry Lisko  
 Mr. & Mrs. Mark A. Lombardi  
 Mr. & Mrs. Brian P. Long  
 Mrs. Barbara Longe  
 Mr. & Mrs. Philip Lowe  
 Mr. & Mrs. Gerard Lucente  
 Mr. & Mrs. John Lyons  
 Mr. & Mrs. Kenneth Lyons  
 Mr. & Mrs. Daniel MacIsaac  
**Mr. & Mrs. Jack Maguire**  
 Mr. & Mrs. Michael Maloney  
 Mr. & Mrs. Richard Mancari  
 Mr. & Mrs. Kenneth A. Mancinelli  
 Mr. & Mrs. Phillip Mancini  
 Mr. & Mrs. Stephen Manning  
 Mr. Michael Martini  
 Mr. & Mrs. Edward Mastrianno  
 Ms. Tracey McCabe  
 Mr. & Mrs. William E. McCole, III  
**Mr. & Mrs. Thomas P. McDonough**  
 Mr. & Mrs. Paul J. McHugh  
 Mr. & Mrs. James L. McKean  
 Mr. & Mrs. Raymond E. McKenna  
 Mr. & Mrs. Roderick McLean  
 Mr. John F. McMahon  
 Mr. & Mrs. Richard Medeiros  
 Mr. & Mrs. Virgilio Medeiros  
 Mr. David Menegat  
 Mr. & Mrs. James J. Missett  
 Mr. & Mrs. Stephen E. Moffatt  
 Mr. & Mrs. John Moon  
**Mr. & Mrs. Charles E. Moran**  
 Mr. & Mrs. John G. Morrissey  
 Reverend Roger C. Moulton\*  
 Mr. & Mrs. Timothy Murphy  
 Mr. & Mrs. John F. Nestor, III  
 Mr. & Mrs. William F. Nicita  
 Mr. & Mrs. Eric J. Nord  
 Mr. & Mrs. John P. Notarangelo

Ms. Robin Nunes  
 Mr. & Mrs. Thomas Nunn  
 Mr. & Mrs. John E. O'Brien  
 Mr. & Mrs. Kevin F. O'Brien  
 Ms. Heather Orosco  
 Mr. & Mrs. Lawrence Osier  
 Mr. & Mrs. Michael Pappas  
 Mr. & Mrs. Michael Pasterczyk  
 Mr. & Ms. Mark Peloquin  
 Mr. & Mrs. Walter J. Peterson  
 Mr. & Mrs. Roger L. Petrin  
 Mr. & Mrs. Philip J. Pietrafitta, Jr.  
 Mr. & Mrs. James A. Pitts  
 Ms. Louise Plack  
 Mr. & Mrs. Alan Potts  
 Mr. & Mrs. Arthur Powell  
 Mr. & Mrs. Joseph Powers  
 Mr. & Mrs. David W. Purington  
 Mr. & Mrs. Albert Quern  
 Mr. & Mrs. John F. Rampa  
 Mr. & Mrs. Fernando Raposo  
 Mr. & Mrs. John R. Redding  
 Mr. & Mrs. John Barry Reid  
 Mr. & Mrs. John Reny  
 Mrs. Therese Ricci  
 Mr. & Mrs. Kenneth Robinson  
 Dr. & Mrs. Steven L. Robinson  
 Mr. David Rogers  
 Mr. & Mrs. William D. Rogers, Jr.  
 Mr. & Mrs. Paul Rosin  
 Mr. & Mrs. William Ryan  
 Mr. & Mrs. Hasim Sabovic  
**Mr. & Mrs. Warren Sackman**  
 Mr. & Mrs. Alden Saddleire  
**Mrs. Lucille Salhany**  
**and Mr. John Polcari**  
 Mr. & Mrs. Alan Segal  
 Mr. & Mrs. Robert M. Seitsinger  
**Dr. & Mrs. Neil E. Share\***  
 Mr. & Mrs. Charles Shea  
 Mr. & Mrs. Michael E. Sokoly  
 Ms. Penelope Stauffer  
 Mr. & Mrs. Daniel Sullivan  
 Mr. & Mrs. Timothy C. Sullivan  
 Mr. & Mrs. Richard Swahlan  
 Mr. & Mrs. Donald C. Taber  
 Mr. & Mrs. Richard A. Tanner  
 Dr. Stephen Thein  
 Mr. Michael A. Thompson  
 Mr. & Mrs. George Tieri  
 Mr. & Mrs. Kenneth Toy  
 Mr. & Mrs. John A. Tropeano  
 Mr. & Mrs. Anthony L. Valente  
 Mrs. Susan C. Varga  
 Mr. & Mrs. Raphael Veve  
 Mr. & Mrs. Enrique Viano  
 Mr. & Mrs. Benedetto Viola  
 Mr. Theodore A. von Glahn, Jr.\*  
**Mr. & Mrs. Thomas Walker**  
 Mr. & Mrs. Daniel V. Walsh  
 Ms. Elizabeth Ward  
 Mr. & Mrs. John W. Warren  
 Mr. & Mrs. Stephen Waystack  
 Dr. Mary Wendel  
 Ms. Sharon K. White  
 Mr. & Mrs. Robert M. Wigmore  
 Ms. Judith Willette  
 Mr. John Witty  
 Mr. & Mrs. Christopher Wolfe  
 Mr. & Mrs. William Woods  
 Mr. & Mrs. Paul Young

## Gifts in Kind

Eve Cartwright '79  
 Nancy Catinella  
 Urit Chaimovitz '98  
 Chantel Daley '05/07  
 Sarah Ferguson  
 RoseMary B. Fuss Center for  
 Research on Aging and  
 Intergenerational Studies  
 Nancy Curtis Grellier '49  
 Hewlett Packard  
 The Hotel indigo  
 Ipswich Clambake Company  
 Kenneally Creative  
 Craig Parsons, PT  
 Amy Salette  
 Peter Spierings  
 Sunshine Sign Company, Inc.  
 Sandra Weston  
 Elaine Zimmerman

## Alumni Events Sponsorships

Lucinda Nolin Johnson '55/'77

## Honorary Gifts

Janet Ramsbotham Blake '64  
 Felice Gordis  
 Ruth S. Shuman  
 Antoinette Ruinen Stapper '56  
 Adelaide Shaffer Van Winkle '36/H'96

## Memorial Gifts

Janet Sawyer Akins '60  
 Carol P. Amorello '82  
 Natalie Hall Campbell '49  
 Donna Boudreau Carpenter '71  
 Edith and Benzo Celli  
 Audrey Lang Clark '53  
 Claire Dennett  
 Diane Donatio  
 Elfreda Reck Dubin '44  
 Kevin Flaherty  
 Thelma Fleishman  
 Carolyn Huntley Gentles '47  
 Ruth Fulton Griffin '38  
 Jane Young Grimson '49  
 Kathryn Poore Hamel '49  
 Wendy Ellen Holzman  
 Marilyn Prince Karcher '49  
 Joyce Halligan Maria '50  
 Michal Longe Matthews '95  
 Joan Feinberg Miller '70  
 Andrew and Mary Thomen  
 Shirley Wolcott Wells '43  
 Jayne Jewett Woodward '40

\* denotes donors with 10+ years of consecutive support of Lasell's Annual Fund  
 (d) deceased

Bold faced indicate Torchbearers or above

## THE HERITAGE SOCIETY

As alumni and friends learn about the benefits of planned giving at Lasell College, many are choosing to provide special support for Lasell's future by establishing a life income gift or bequest. The Heritage Society honors these individuals who champion the next generation of students at Lasell.

We are pleased to pay tribute to the following members of the Heritage Society (as of August 11, 2009):

Lynn Blodgett Williamson '46  
**Honorary Chair**

**Class of 1930**  
Marguerite Boyd Greene

**Class of 1931**  
Jane Hupman Preston

**Class of 1934**  
Anonymous  
Mabelle Hickcox Camp  
Dell L. Masterjohn

**Class of 1936**  
Adelaide Shaffer Van Winkle H'96  
Emily Hubbel Weiss (d)  
and Gerard A. Weiss

**Class of 1937**  
Marjorie Westgate Doran  
and (d) A. Benedict Doran  
Elizabeth Ann Wisdom

**Class of 1938**  
Merrill Brown Lett  
Penny DeLaney Ogrinz  
S. Joanne Bohaker Smith  
Harriet Newcomb Stoughton

**Class of 1939**  
Virginia Thomas Baxter  
Janet Whitten Smith

**Class of 1940**  
Jeanne Hubbard Brooks  
Lucy Harrison Eimer  
Elizabeth Carlisle Holmberg  
Dorothy Cooke Merchant  
Ruth Fulton Rardin  
Jayne Jewett Woodward

**Class of 1941**  
Marian Fitts Sternkopf

**Class of 1942**  
Anonymous  
Jean Barnes  
Ruth Turner Crosby H'92  
Marcia Corey Hanson

**Class of 1943**  
Elizabeth Gorton Collier  
Gertrude Baninger Duquette  
Ann Preuss Gillerlain  
Priscilla Spence Hall  
Patricia Bixby McHugo  
(d) Eleanor Millard Parsons  
and E. Spencer Parsons  
Janet Reid Richards

**Class of 1944**  
Jean Campbell  
Carol Hill Hart  
Gloria Boyd Major-Brown  
Jane Maynard Robbins (d)  
and Clesson Robbins

**Class of 1945**  
Jane A. Dittrich  
Eugenia Cooney Glow  
Theresa Bergeron Hoyt  
Susan Slocum Klingbeil  
Janet Eaton Maynard

**Class of 1946**  
Joan Walker Runge  
Lynn Blodgett Williamson

**Class of 1947**  
Beverly Tucker Bowen  
Anne Alger Ehrlich  
Jean Morgan Koenitzer  
Margaret Beach Otis  
Linda Koempel Tompkins

**Class of 1948**  
Nancy Larsen Bailey  
and James Bailey  
Frances Lee Osborne  
Alice Johnson Thornton  
Cecelia (Bubbles) Davenport Weidmann  
Irma Lipsitt Wolfe

**Class of 1949**  
Joyce Brandt Francis  
Jewell Ward Ganger  
and (d) Jon L. Ganger  
Jane Wadhams Hazen  
Janet White MacLure  
Sarah Taylor Murray

**Class of 1950**  
Anonymous  
Joan Antun Rednor  
and (d) Charles Rednor  
Ariel Leonard Robinson  
Marni Nahigian Sarkisian

**Class of 1951**  
Jo-Ann Vojir Massey  
and Dwight Massey  
Joan Howe Weber

**Class of 1954**  
Anonymous

**Class of 1955**  
Anonymous  
Nancy Goodman Cobin  
and Howard Cobin  
Genevieve G. Harold  
Bobbie R. Jennings  
Joy Stewart Rice

**Class of 1956**  
Anonymous  
Anonymous  
Nancy Shook Bender  
Margaret Schwingel Kraft

**Class of 1957**  
Marcia James Carthaus  
Nancy Van Deusen Connor  
and Philip J. Connor  
Caroline Killam Moller

**Class of 1958**  
Anonymous  
Marsha Singer Marshall  
and Richard Marshall  
Judith George Stephens

**Class of 1959**  
Joan Sycle Norwitz

**Class of 1960**  
Sheila Gordon Stein

**Class of 1961**  
Elizabeth C. Hood  
Laura T. Jensen  
Geraldine Weidman Wight

**Class of 1963**  
Anonymous  
Kay Ingrid Pinkham  
Margo Hicks Waite

**Class of 1967**  
Susan B. Lillywhite

**Class of 1968**  
Judith Lipkins Ness  
Ann Sterner Tyler

**Class of 1969**  
MaryAnn Mitchell Beaver

**Class of 1974**  
Rena Berke

**Class of 1983**  
Pell (Rusty) Kennedy  
Katharine Urner-Jones

**Class of 1987**  
Anonymous

**Friends**  
Anonymous  
Calvin R. Carver  
Thomas E. J. de Witt  
and Margaret E. Ward  
Professor Sylvia B. Goodman  
Mervin and Rosalind D. Gray  
Robert U. Johnsen Family  
Arthur P. Menard  
Donald and Charlotte Winslow  
Kyo Yamawaki

(d) deceased

## REMEMBERING WITH GRATITUDE

A large portion of Lasell's endowment growth has come through the generosity of these honored alumni and friends who made provision for Lasell in their estate plans and through life-income gifts, which have now been received by the College. We are forever grateful to these cherished individuals whose legacies live on through our current and future students.

Anonymous '29  
Anonymous '36  
Anonymous '37  
Anonymous '40  
Margaret Abrahamian '48  
Carol J. Bancroft '51  
Diane Palady Barry '49  
Frances Austin Beaumier '37  
Diane Heath Beever '49  
Judith Woodbury Berenson '46  
Sibyl Weymouth Branniff '19  
Barbara Ordway Brewer '35

Ruth Lindquist Brinton  
Dorothy Hale Brown '26  
Doris Bissett Bryant '21  
Evelyn Suor Butterworth '27  
Dorothy Meeker Buttle '30  
Elizabeth Madeira Campbell '22  
Henrietta Hisgen Campbell '28  
Laurence C. Campbell  
Julia C. Case '32  
Lucille Huse Chappell '37  
Dorothy England Chester '29  
Laura C. Cobb '39

Mildred Bell Cole '31  
Mabel Burns Coleman '28  
Dorothy Ballou Collier '24  
A. Jeanne Price Crye '32  
Marjorie Magune Curtis '31  
Janet Owens DeArment '37  
Helen Duncan Devereaux '26  
Katharine Peck Dietler '35  
Ruth Anson Drayer '43  
Norma Booth DuVally '40  
Esther Palmer Dwinell '24  
Bernice Kent Ennis '28  
A. Isabel LaCasse Fior '34  
Barbara Schill Fournier '40  
Lydia Adams Godsoe '18  
Hester Shaw Gordon '28  
Sarah Wild Gordon '21  
Lillian G. Grant '20  
Arthur T. Gregorian  
Mildred J. Guyett '32  
Ruth D. Hayden '20  
Dorothy Young Heath '30  
Michelle B. Hires '48

Nancy Larson Holbrook '42  
Marion Camandona Holden '38  
P. Lynn Kiefer Holt '61  
Evelyn Douglass Hooper '28  
Elinor Kuchler Hopkins '43  
Eleanor C. Humphrey '29  
Estelle L. Jenney '25  
Marion E. Johnson '31  
Shirley Frank Kerner '45  
Portia E. Kieser '40  
Jean Sargent Lee '49  
Katherine Braithwaite Leutwyler '29  
Joan Lindeman '54  
Minerva Damon Ludewig '27  
Bunny Quinn McKenna '46  
Emma H. Ockert '26  
Natalie E. Park '32  
Helen B. Perry '24  
Beatrice Kidd Phelps '38  
Daniel W. Puffer  
Eleanor Dippel Reed '35  
Pauline LeClaire Reiter '27  
Elizabeth G. Richards '16

C. Marguerite Virkler Roberts '26  
Elizabeth Sylvester Robinson '38  
Rosalie Brightman Rosen '27  
Elizabeth Page Sealey '32  
Julia Crafts Sheridan  
Phyllis Rafferty Shoemaker '22  
Rena A. Silverman '52  
Marjorie Maxfield Smith '27  
Warren Spooner  
Robert S. Stoller  
Dorothy Hagadorn Taylor '25  
Molly Upham Taylor '35  
Anne Campbell Terrill '37  
Carolyn Clark Thomas '49  
Dorothy Thomas Thomas '38  
Marvine Weatherby '41  
Louise Hegeman Whitman '25  
Sylvia Morgan Williams '30  
Priscilla Winslow '35  
E. Frances Flynn Witham '27  
Leonard P. Wolfe, Jr.  
Deborah York '36

## Other Capital/ Endowed/ Restricted Funds

Ruth Paetz Braun '54  
Urit Chaimovitz '98  
Albert Donatio  
Dana A. Hamel  
Laura T. Jensen '61  
Kevin Lawson '08  
Kathleen Rebmann Royka '64  
Marguerite Nahigian Sarkisian '50  
Katharine Urner-Jones '83  
Michelle Walmsley Vigneux  
Jane Wan

## Scholarship Funds

AGL Resources  
Andrew Delaney Foundation  
Calvin R. Carver, Jr.  
Estate of Lucille Huse Chappell '37  
Estate of Henrietta Hisgen  
Campbell '28  
Jonathan B. Kay  
Caroline Killam Moller '57  
The Schrafft Charitable Trust  
Harriet Markham Wedeman '48

## Estates

### Capital/Endowment/Restricted

Estate of Jean B. Adams '40  
Estate of Elinor Kucher Hopkins '43  
Estate of Jean Sargent Lee '49  
Estate of Robert S. Stoller  
Estate of Mary Upham Taylor '35  
Estate of Emily Hubbel Weiss '36

### Annual Fund

George S. DeArment Trust

## Foundations

### Capital/Endowment/Restricted

Davis Educational Foundation

### Annual Fund

Joan and Robert Arnow Fund  
The Avon Family Foundation  
Boston Foundation  
Desai Family Foundation  
Ernst & Young Foundation  
Florin Family Foundation  
Harris Family Foundation  
Jeannine and Dick Holway Fund  
Jewish Communal Fund  
MBA3 Foundation of  
Ayco Charitable Foundation  
Francis J. and Susan M. Perry Fund  
Dr. John W. Pilitsis Charitable Fund  
Alan H. and Jerje Ann Robbins Fund  
The Saunders Foundation

## Corporations

### Capital/Endowment/Restricted

D & S Landscaping & Excavating, Inc.  
Gallagher Koster  
Grant Thornton, LLP  
Metric Construction Company  
Sodexo, Inc. & Affiliates  
The Village Bank

### Annual Fund

ACE INA Foundation  
Aetna Foundation, Inc.  
American International Group, Inc.  
AT & T Foundation, Inc.  
Boeing Corporation  
Bristol-Myers Squibb Foundation, Inc.  
Deloitte Foundation, Inc.  
Deutsche Bank  
Eastern Bank  
Ecolab Foundation  
Eli Lilly and Company Foundation  
Erickson Retirement  
ExxonMobil Foundation  
FM Global Foundation  
Gartner Associates  
General Electric Foundation  
Houghton Mifflin Company  
International Business  
Machines Corporation  
IKON Office Solutions Foundation  
Kraft Foods  
Lockheed Martin Corporation  
Macy's, Inc.  
MeadWestvaco Foundation  
Merrill Lynch & Co. Foundation, Inc.

The Millipore Foundation  
Mobil Foundation, Inc.  
National Grid  
Northeast Utilities System  
Parker Hannifin Foundation  
Pfizer Inc.  
Pharmacia Foundation  
Playboy Enterprises, Inc.  
Procter & Gamble  
The Prudential Foundation  
Raytheon Company  
Safeco Insurance Companies  
Schering-Plough Foundation, Inc.  
Shell Oil Company Foundation  
The Stanley Works Foundation  
Texas Instruments Foundation  
United Parcel Service  
Verizon Foundation  
Vulcan Materials Company  
The Xerox Foundation

## Athletic Gifts Fund

Brittany Baker '07  
Melissa Kelley Berkov '96  
Mr. & Mrs. Wayne Berliner  
Bryan Bobo '08  
Mr. & Mrs. James DeMieri  
Mr. & Mrs. Kenneth Dickinson  
Mr. & Mrs. Christopher Gagne  
Andrew Gundlach '08  
Mr. & Mrs. John Lyons  
Mr. & Mrs. Charles Moran  
Lisa Petrucci  
Michael Petrucci '05  
Betsy Gimbel Ratner '69  
Cynthia Clark Rose-Fraze '57  
Phillip Ruderman

## Leadership Class Fundraising Fund

Mr. & Mrs. Richard Ballou  
Stephanie Ballou '11  
Mr. & Mrs. Joseph Bernert  
Mr. & Mrs. Peter Bernstein  
Mr. & Mrs. Daniel Boucher  
David Boucher  
Mr. & Mrs. Stephen Chalone  
Danielle Cote '11  
Christopher Heeren  
Timothy Heeren  
Tracy A. Jaques  
La Ronga Bakery  
Mr. & Mrs. Joseph Maguire  
Mr. & Mrs. Jon Marquis  
Sarah Meyers '11  
Mr. & Mrs. Thomas Meyers  
Vincent Miola  
New England Finish Systems  
Mr. & Mrs. Rodney Silvia

## Spotlight:



## A Gift for the Future

Lucille Huse Chappell '37 credited Lasell with her professional success because it is where she took and loved her first biology course. After graduating, she went on to Massachusetts General Hospital and was trained to work in a cytology lab. Eventually she supervised cytology labs in 300 Illinois hospitals — a career she held for 35 years until her retirement in 1985.

In 1997, in recognition of her 60th Reunion, Lucille demonstrated her love for Lasell by making a gift by Will — she made plans to establish the "Lucille Huse Chappell '37 Scholarship" to support students with financial need. She passed away in 2006 and future students will benefit from her generous legacy.





**The Lasell College Report On The Year:**  
July 1, 2008 - June 30, 2009

**Ruth S. Shuman**  
Vice President for  
Institutional Advancement

**Haegan Forrest**  
Director of Annual Giving  
and Constituent Relations

**Michelle Gaseau**  
Director of Communications

**Jeanne A. Johnsen '72**  
Director of Support Services

**Phyllis Taylor**  
Director of Alumni Publications

**Katharine Urner-Jones '83**  
Director of Development

**CREDITS:**

**Phyllis Taylor**  
Editor

**Michelle Gaseau**  
Contributing Editor

**Jeanne A. Johnsen '72**  
Editor, Honor Roll of Donors

**Kenneally Creative**  
Design

**Photography**  
David Carlson  
Michelle Gaseau  
Phyllis Taylor





**Office of Institutional Advancement**  
1844 Commonwealth Avenue  
Newton, MA 02466-2716

NONPROFIT  
ORGANIZATION  
U.S. POSTAGE  
PAID  
BOSTON, MA  
PERMIT 51347

Lasell College —  
Where the Classroom is the Real World

